

Project Name: .....

Location: .....

Specifier: .....

Rep Agency: .....

Fixture Type: .....

Product Code: .....

# KLIK LEDpod™ 40 Patented

## DESCRIPTION

Discrete, seamless point source LED fixture for use in all code-compliant handrail, especially curving ramps and helical stairs as well as long runs on bridges and pedestrian paths. Asymmetric optic allows mounting at rail nadir, eliminating uncomfortable glare issues. Typical spacing between LEDpods on stairs is 24", and on level runs is 48".

## HOUSING

Aluminum body has a fine 25-micron finish and is then hard-coat anodized, thus preventing galvanic corrosion. Silicone gasket seals the installation from water ingress and provides added means of electrical isolation to minimize potential for galvanic reaction.

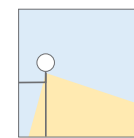
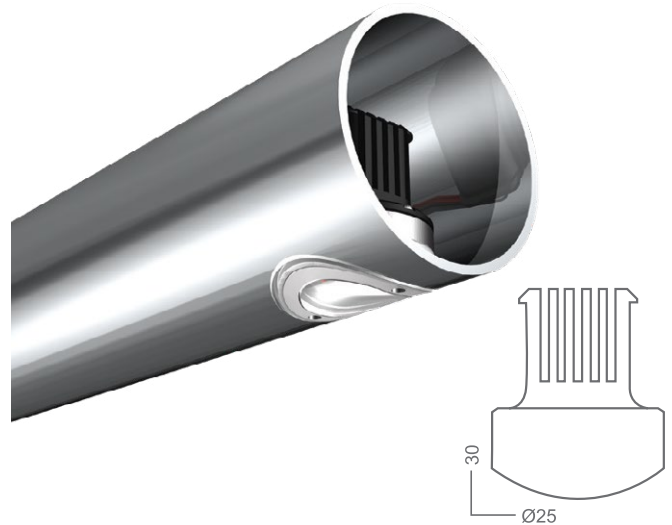
## MOUNTING

Patented attachment method offers unparalleled security and ease of mounting. Requires only a simple drilled hole in railing material. All conductors remain internal to railing to provide secure and safe wiring. IK10 Impact rating ensures vandal resistance.

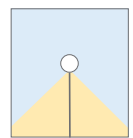
- Tube Size:  $\varnothing$  1.5" - 1.75", Max. wall .2"  
*Other sizes available upon request.*
- Cut Out: 25mm
  - Must use a 25mm annular cutter [NOT a 1" cutter].

## ELECTRICAL/LED DRIVER

- Input Voltage: 24 VDC
- Driver: Must use class 2 driver
  - Primary Driver: 110 - 277 VAC UL Listed Constant Voltage
  - Secondary Driver: 350 - 700mA Constant Current (provided with fixture)
- Control: 0-10V, DALI, DMX
  - DMX control for dimming only, not for individually addressed LEDpod
- Enclosure: Minimum NEMA2 for indoor, NEMA 3R for outdoor
- Wire connectors provided; factory pre-wire available, consult factory



Asymmetrical  
65° beam



Symmetrical  
90° beam



**ETL listed**  
UL 1598/CSA 22.2; CE



**LED Operating Temp:**  
-40°F - 160°F



**Weatherproof Rating:**  
IP66  
Wet location rated



**3G Vibration**  
per MIL-STD-810G



**Impact resistance:**  
IK10



**Wildlife friendly**



**International Dark Sky Association Certified** Amber  $\leq$  3000K

\* All IP rated luminaires tested to AS60529-2004 Degrees of protection provided by enclosures (IP Code)

# KLIK LEDpod™ 40 Patented

| SPECIFICATION TABLE |                          | Follow the steps to specify your fixture. Enter Product Code in field at top of page. Example: LP4030KA40 |                      |                    |                          |                  |                               |                |
|---------------------|--------------------------|---|----------------------|--------------------|--------------------------|------------------|-------------------------------|----------------|
| Fixture Type        | Color Temp [K]           | Distribution  | Rail Wall Thickness¹ | Lens Options       | Security                 | Output (W)       | Anodized Bezel Options        | Control        |
| LP40                | 22K 2200K                | A Asymmetric  | 1512 1.5" x 11ga     | - Clear lens [Std] | - Tamper resistant [Std] | - 500mA 2W [Std] | - Marine grade anodized [Std] | - 0-10V Dim    |
|                     | 27K 2700K                | S Symmetric   | 1513 1.5" x 1/8 Wall | FR Opaque frost    | TP Tamperproof           | 350 350mA 1.5W   | BRS Antique Brass             | DMX1 DMX 1 Ch  |
|                     | 30K 3000K                |   | 1506 1.5" 16ga       | OT Optical filter  | [Requires the KLIK tool] | 700 700mA 2.6W   | BLK Black Anodized            | PH [Phase dim] |
|                     | 35K 3500K                |   | 05 1 1/4 SC5 Pipe    |                    |                          |                  | BZ Bronze                     |                |
|                     | 40K 4000K                |   | 10 1 1/4 SC10 Pipe   |                    |                          |                  | ANT Dark Antique              |                |
|                     | AMB FWC Amber            |   | 40 1 1/4 SC40 Pipe   |                    |                          |                  | GLD Rose Gold                 |                |
|                     | PCA Phos-converted Amber |   | 80 1 1/4 SC80 Pipe   |                    |                          |                  |                               |                |
|                     | R Red                    |   | CUST Non-stock       |                    |                          |                  |                               |                |
|                     | G Green                  |   |                      |                    |                          |                  |                               |                |
|                     | B Blue                   |   |                      |                    |                          |                  |                               |                |

¹Clips for Bronze railing requires a special alloy | consult factory

| LED PERFORMANCE |  | Outputs based on 3000K |     |   | SYMMETRICAL      | ASYMMETRICAL |
|-----------------|--|------------------------|-----|---|------------------|--------------|
| LED:            | Cree XT-E                                    | W                      | mA  | V | Delivered Lumens |              |
| CCT:            | Refer to the specification table for details | 1.5                    | 350 | 3 | 115              | 81           |
| CRI:            | 80-85  | 2                      | 500 | 3 | 165              | 123          |
| Life:           | 80% at 50k hrs and 85°C                      | 2.6                    | 700 | 3 | 214              | 160          |
| Binning:        | 3 MacAdam Steps                              |                        |     |   |                  |              |
| Warranty:       | 5 Year Warranty                              |                        |     |   |                  |              |

| REMOTE MOUNTING DISTANCE CHART |  |        |        |        |
|--------------------------------|--|--------|--------|--------|
| 24 VDC 100W Driver             | Approx. distance from driver to first LED at 32 fixtures |        |        |        |
| Wire Size                      | 10 AWG   | 12 AWG | 14 AWG | 16 AWG |
| Distance                       | 525'   | 328'   | 213'   | 131'   |

| PRIMARY DRIVER            |                      |         |                        |
|---------------------------|----------------------|---------|------------------------|
| Power Supply 24V DC [PSU] | Secondary LED Driver | Spacing | Maximum KLIK LEDpods™* |
| 110 - 277 Primary Voltage | 700mA                | 24"     | 30                     |
| Remotely Mounted          | 500mA                | 24"     | 37                     |
| Dimming Control           | 350mA                | 24"     | 50                     |
| 10" x 1.5" x 2"           |                      |         |                        |

Increased spacing or higher output LEDpods reduces the number of PODs per circuit and the remote distance.

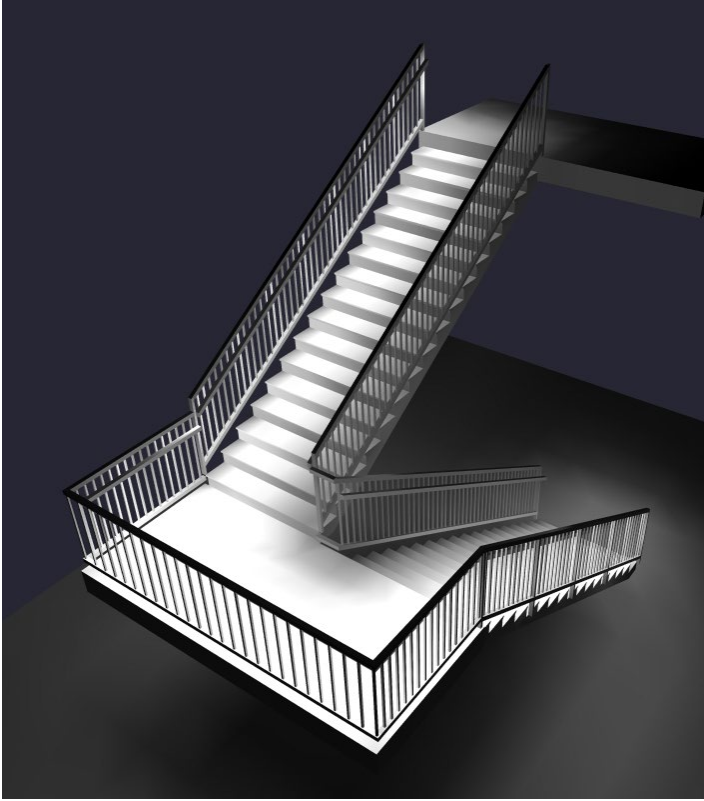
\*Based on 16 AWG between LEDpods ≤ 50' remote distance

| REMOTE POWER SUPPLIES [PSUs] |  |
|------------------------------|--|
| LP040WPRITRNDIMIP            | Class 2; 40W; 0-10 Dim Constant Voltage Remote PSU [IP67 (Temp Submersion) Rated; -40°C ~ +85°C]       |
| LP096WPRITRNDIM              | Class 2, 96W, 0-10 Dim Constant Voltage Remote PSU [IP67 (Temp Submersion) Rated; -40°C ~ +80°C]       |
| LP100WPRITRNDIM              | Class 2, 96W, 0-10 Dim Constant Voltage Remote PSU [IP64 (Damp Location) Rated; -25°C ~ +40°C]         |
| LPQZ96WUNV24VPH010           | Class 2, 96W, Phase or 0-10 Dim Constant Voltage Remote PSU [IP66 (Wet Location) Rated; -40°C ~ +60°C] |
| LPQZ96WUNV24VDMX1CH          | Class 2, 96W, 8-Bit DMX Dim Constant Voltage Remote PSU [IP66 (Wet Location) Rated; -40°C ~ +60°C]     |

| REMOTE NEMA ENCLOSURES |   |
|------------------------|---|
| LPNEMA2RENCLJR         | NEMA2 INDOOR enclosure for LP100WPRITRNDIM, 12 x 3.3 x 2                                    |
| LPNEMA3RENCLJR         | NEMA3R Drip Proof Enclosure, 4 x 4 x 12 [IP24 Equivalent]                                   |
| LPNEMA3RXENCLSS        | NEMA3 304 Lockable Stainless Steel Drip Proof Enclosure 4 x 4 x 12 [IP24 Equivalent]        |
| LPNEMA4ENCLJR          | NEMA4 Watertight Enclosure, 6 x 4 x 12 [IP66 Equivalent]; NEMA4X                            |
| LPNEMA4XENCLSSJR       | NEMA4 304 Lockable Stainless Steel Watertight Enclosure 6 x 4 x 12 [IP66 Equivalent] NEMA4X |
| LPNEMA6PTR0            | NEMA6 Watertight Enclosure Wiring Trough, 2 x 3 x 14 [IP68 Equivalent]                      |

Additional driver & enclosure configurations available, including IP68 options  
 Please note the KLIK UL Listing requires purchase of a remote driver and enclosure.

# KLIK LEDpod™ 40 Patented SINGLE SIDED

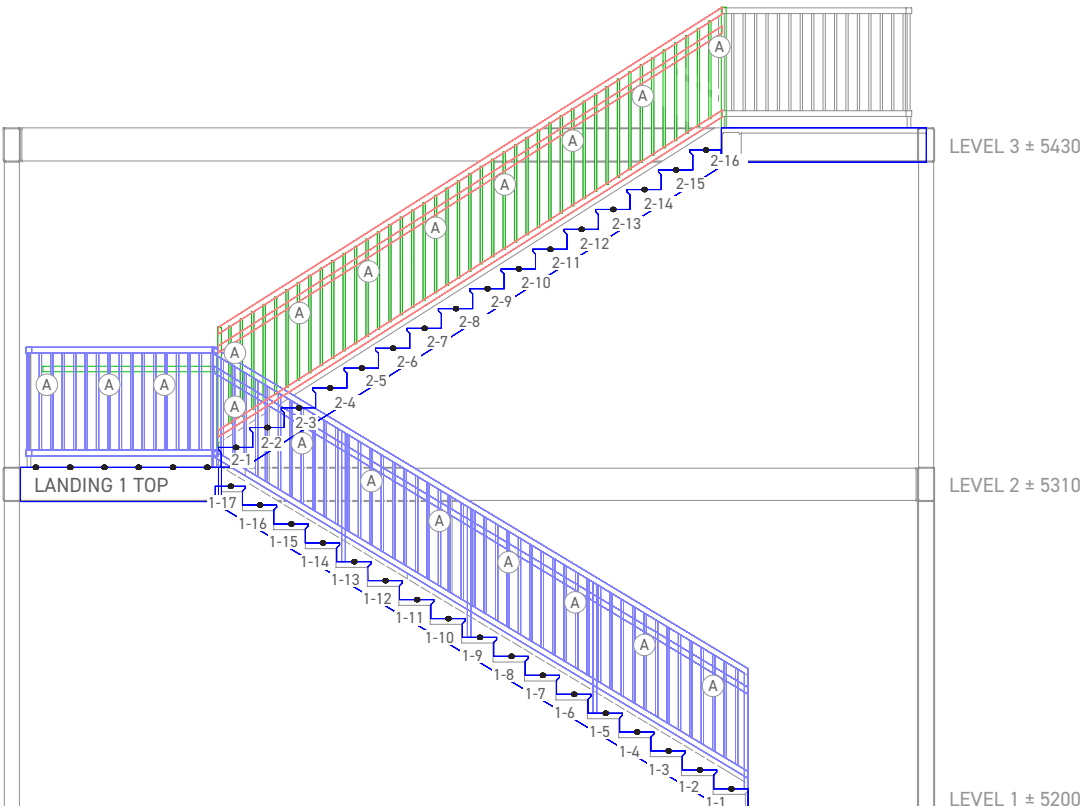


| QTY | LABEL | ARRANGEMENT | LUMENS | LLF   | DESCRIPTION                          |
|-----|-------|-------------|--------|-------|--------------------------------------|
| 26  | A     | Single      | 130    | 0.900 | LPOD40-3K-500mA-2.0W-Asym Clear Lens |

Landing readings taken on landing. Stair readings taken on stair. (Design based on 2' centers.)

| LABEL   | UNITS | AVG   | MAX  | MIN | AVG/MIN | MAX/MIN |
|---------|-------|-------|------|-----|---------|---------|
| Landing | Fc    | 13.73 | 22.2 | 3.0 | 4.58    | 7.40    |

| STAIRS | UNITS | AVG  | MAX  | MIN | AVG/MIN | MAX/MIN |
|--------|-------|------|------|-----|---------|---------|
| 1-1    | Fc    | 3.99 | 5.9  | 0.9 | 4.43    | 6.56    |
| 1-10   | Fc    | 6.83 | 12.0 | 0.9 | 7.59    | 13.33   |
| 1-11   | Fc    | 6.68 | 11.3 | 0.9 | 7.42    | 12.56   |
| 1-12   | Fc    | 6.86 | 12.1 | 0.9 | 7.62    | 13.44   |
| 1-13   | Fc    | 6.50 | 11.1 | 0.8 | 8.13    | 13.88   |
| 1-14   | Fc    | 6.84 | 12.1 | 0.8 | 8.55    | 15.13   |
| 1-15   | Fc    | 6.43 | 11.2 | 0.8 | 8.04    | 14.00   |
| 1-16   | Fc    | 6.88 | 12.4 | 0.6 | 11.47   | 20.67   |
| 1-17   | Fc    | 6.14 | 10.9 | 0.6 | 10.23   | 18.17   |
| 1-2    | Fc    | 6.11 | 9.9  | 0.9 | 6.79    | 11.00   |
| 1-3    | Fc    | 7.00 | 12.2 | 0.9 | 7.78    | 13.56   |
| 1-4    | Fc    | 6.64 | 11.4 | 1.0 | 6.64    | 11.40   |
| 1-5    | Fc    | 7.04 | 12.2 | 0.9 | 7.82    | 13.56   |
| 1-6    | Fc    | 6.73 | 11.6 | 1.0 | 6.73    | 11.60   |
| 1-7    | Fc    | 6.96 | 11.9 | 0.9 | 7.73    | 13.22   |
| 1-8    | Fc    | 6.80 | 11.9 | 0.9 | 7.56    | 13.22   |
| 1-9    | Fc    | 6.86 | 11.7 | 0.9 | 7.62    | 13.00   |
| 2-1    | Fc    | 8.36 | 14.5 | 2.1 | 3.98    | 6.90    |
| 2-10   | Fc    | 7.33 | 12.6 | 1.9 | 3.86    | 6.63    |
| 2-11   | Fc    | 7.60 | 13.5 | 1.7 | 4.47    | 7.94    |
| 2-12   | Fc    | 7.28 | 12.7 | 2.0 | 3.64    | 6.35    |
| 2-13   | Fc    | 7.74 | 13.5 | 1.7 | 4.55    | 7.94    |
| 2-14   | Fc    | 7.00 | 13.0 | 1.5 | 4.67    | 8.67    |
| 2-15   | Fc    | 6.56 | 11.8 | 1.1 | 5.96    | 10.73   |
| 2-16   | Fc    | 5.65 | 11.2 | 0.7 | 8.07    | 16.00   |
| 2-2    | Fc    | 8.10 | 14.3 | 1.9 | 4.26    | 7.53    |
| 2-3    | Fc    | 7.05 | 13.1 | 1.5 | 4.70    | 8.73    |
| 2-4    | Fc    | 7.85 | 13.6 | 1.8 | 4.36    | 7.56    |
| 2-5    | Fc    | 7.25 | 13.4 | 1.6 | 4.53    | 8.38    |
| 2-6    | Fc    | 7.66 | 12.9 | 1.8 | 4.26    | 7.17    |
| 2-7    | Fc    | 7.45 | 13.5 | 1.6 | 4.66    | 8.44    |
| 2-8    | Fc    | 7.46 | 12.6 | 1.8 | 4.14    | 7.00    |
| 2-9    | Fc    | 7.56 | 13.7 | 1.6 | 4.73    | 8.56    |

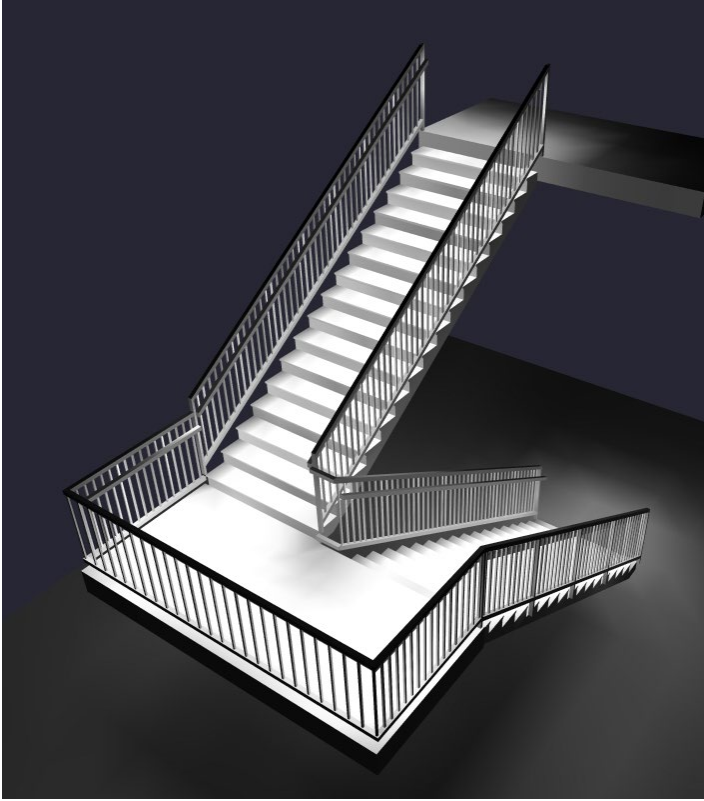


# KLIK LEDpod™ 40 Patented SINGLE SIDED

## LANDING 1 TOP

|            |            |                    |             |      |      |      |      |      |      |      |      |      |      |      |      |      |      |             |      |      |             |
|------------|------------|--------------------|-------------|------|------|------|------|------|------|------|------|------|------|------|------|------|------|-------------|------|------|-------------|
| 2          | 5'-11 1/4" |                    | 9.4         | 12.9 | 13.8 | 12.8 | 11.5 | 10.7 | 10.5 | 10.8 | 11.7 | 13.1 | 14.2 | 12.9 | 9.9  |      |      |             |      |      |             |
|            |            |                    | 14.3        | 18.8 | 19.8 | 18.3 | 16.4 | 15.2 | 14.9 | 15.4 | 16.8 | 18.9 | 20.5 | 19.2 | 15.1 |      |      |             |      |      |             |
|            |            |                    | 16.1        | 20.6 | 20.9 | 18.4 | 15.8 | 14.2 | 13.9 | 14.6 | 16.7 | 19.6 | 22.2 | 21.6 | 16.4 |      |      |             |      |      |             |
|            |            |                    | 15.0        | 19.0 | 18.5 | 14.9 | 11.7 | 10.0 | 9.8  | 10.9 | 13.4 | 16.9 | 20.1 | 20.3 | 15.2 |      |      |             |      |      |             |
|            |            |                    | 13.4        | 16.8 | 15.2 | 10.9 | 7.2  | 5.6  | 5.7  | 6.8  | 9.4  | 12.9 | 16.2 | 17.0 | 12.8 |      |      |             |      |      |             |
|            |            |                    | 12.6        | 15.6 | 13.3 | 8.6  | 4.7  | 3.0  | 3.2  | 3.5  | 6.5  | 9.6  | 12.7 | 14.1 | 8.8  |      |      |             |      |      |             |
| 1.8        | ± 26'-8"   | 15'-0 1/2"         | STAIRS 1-17 | 10.2 | 10.9 | 9.9  | 7.3  | 5.1  | 3.4  | 1.7  | 0.6  |      | 2.1  | 3.2  | 4.9  | 7.5  | 10.2 | 13.2        | 14.5 | 11.3 | STAIRS 2-1  |
|            |            |                    | STAIRS 1-16 | 10.4 | 12.4 | 11.5 | 8.9  | 6.0  | 3.5  | 1.7  | 0.6  |      | 1.9  | 2.8  | 4.4  | 6.9  | 10.0 | 12.7        | 14.3 | 11.8 | STAIRS 2-2  |
|            |            |                    | STAIRS 1-15 | 10.0 | 11.2 | 10.2 | 7.9  | 5.6  | 3.7  | 2.0  | 0.8  |      | 1.8  | 2.8  | 4.5  | 6.9  | 9.7  | 12.1        | 13.6 | 11.4 | STAIRS 2-3  |
|            |            |                    | STAIRS 1-14 | 10.2 | 12.1 | 11.2 | 8.7  | 6.0  | 3.7  | 2.0  | 0.8  |      | 1.5  | 2.5  | 3.9  | 5.7  | 8.1  | 11.5        | 13.1 | 10.1 | STAIRS 2-4  |
|            |            |                    | STAIRS 1-13 | 9.7  | 11.1 | 10.2 | 8.2  | 5.9  | 4.0  | 2.1  | 0.8  |      | 1.6  | 2.5  | 3.8  | 5.8  | 8.7  | 11.8        | 13.4 | 10.4 | STAIRS 2-5  |
|            |            |                    | STAIRS 1-12 | 10.2 | 12.1 | 11.2 | 8.7  | 5.9  | 3.8  | 2.1  | 0.9  |      | 1.8  | 2.9  | 4.7  | 6.9  | 9.5  | 11.6        | 12.9 | 11.0 | STAIRS 2-6  |
|            |            |                    | STAIRS 1-11 | 9.9  | 11.3 | 10.5 | 8.4  | 6.1  | 4.1  | 2.2  | 0.9  |      | 1.6  | 2.6  | 3.9  | 6.1  | 9.1  | 12.0        | 13.5 | 10.8 | STAIRS 2-7  |
|            |            |                    | STAIRS 1-10 | 10.0 | 12.0 | 11.1 | 8.6  | 5.9  | 3.9  | 2.2  | 0.9  |      | 1.8  | 3.0  | 4.6  | 6.7  | 9.2  | 11.3        | 12.6 | 10.5 | STAIRS 2-8  |
|            |            |                    | STAIRS 1-9  | 10.2 | 11.7 | 10.8 | 8.7  | 6.3  | 4.1  | 2.2  | 0.9  |      | 1.6  | 2.6  | 3.9  | 6.4  | 9.2  | 12.1        | 13.7 | 11.0 | STAIRS 2-9  |
|            |            |                    | STAIRS 1-8  | 10.0 | 11.9 | 11.0 | 8.4  | 5.9  | 4.0  | 2.3  | 0.9  |      | 1.9  | 3.0  | 4.6  | 6.5  | 8.7  | 11.2        | 12.6 | 10.1 | STAIRS 2-10 |
|            |            |                    | STAIRS 1-7  | 10.3 | 11.9 | 11.1 | 8.9  | 6.3  | 4.1  | 2.2  | 0.9  |      | 1.7  | 2.6  | 4.1  | 6.6  | 9.3  | 12.0        | 13.5 | 11.0 | STAIRS 2-11 |
|            |            |                    | STAIRS 1-6  | 9.9  | 11.6 | 10.8 | 8.3  | 5.9  | 4.0  | 2.3  | 1.0  |      | 2.0  | 3.1  | 4.5  | 6.4  | 8.3  | 11.3        | 12.7 | 9.9  | STAIRS 2-12 |
|            |            |                    | STAIRS 1-5  | 10.4 | 12.2 | 11.3 | 8.9  | 6.3  | 4.1  | 2.2  | 0.9  |      | 1.7  | 2.7  | 4.4  | 6.8  | 9.6  | 12.0        | 13.5 | 11.2 | STAIRS 2-13 |
|            |            |                    | STAIRS 1-4  | 9.7  | 11.4 | 10.5 | 8.2  | 5.9  | 4.1  | 2.3  | 1.0  |      | 1.5  | 2.5  | 3.8  | 5.7  | 8.2  | 11.4        | 13.0 | 9.9  | STAIRS 2-14 |
|            |            |                    | STAIRS 1-3  | 10.3 | 12.2 | 11.3 | 8.9  | 6.2  | 4.0  | 2.2  | 0.9  |      | 1.1  | 1.9  | 3.5  | 5.7  | 8.3  | 10.3        | 11.8 | 9.9  | STAIRS 2-15 |
| STAIRS 1-2 | 8.8        | 9.9                | 9.3         | 7.7  | 5.9  | 4.1  | 2.3  | 0.9  |      | 0.7  | 1.4  | 2.3  | 4.2  | 6.9  | 9.7  | 11.2 | 8.8  | STAIRS 2-16 |      |      |             |
| STAIRS 1-1 | 4.8        | 5.9                | 5.7         | 5.1  | 4.2  | 3.3  | 2.0  | 0.9  |      |      |      |      |      |      |      |      |      |             |      |      |             |
| 1.2        | 5'-8 1/4"  |                    |             |      |      |      |      |      |      |      |      |      |      |      |      |      |      |             |      |      |             |
|            |            | Stair width - 5'8" |             |      |      |      |      |      |      |      |      |      |      |      |      |      |      |             |      |      |             |
| 1          |            |                    |             |      |      |      |      |      |      |      |      |      |      |      |      |      |      |             |      |      |             |

# KLIK LEDpod™ 40 Patented DOUBLE SIDED

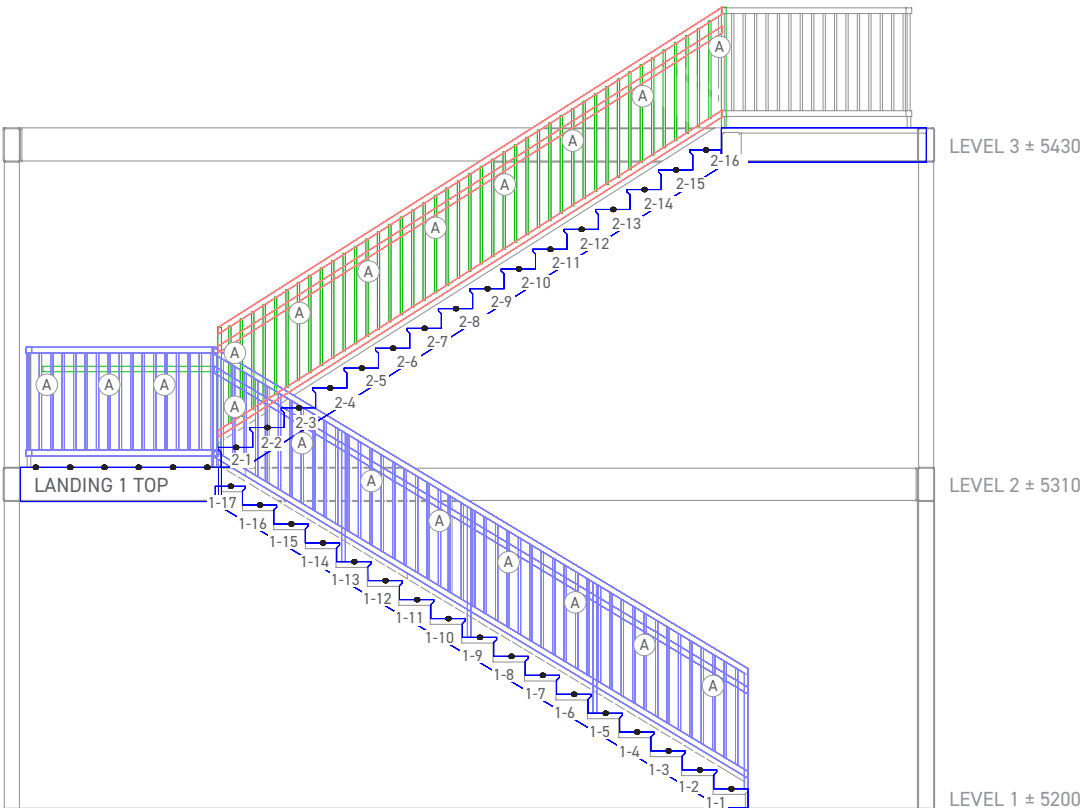


| QTY | LABEL | ARRANGEMENT | LUMENS | LLF   | DESCRIPTION                          |
|-----|-------|-------------|--------|-------|--------------------------------------|
| 42  | A     | Single      | 130    | 0.900 | LPOD40-3K-500mA-2.0W-Asym Clear Lens |

Landing readings taken on landing. Stair readings taken on stair. (Design based on 2' centers.)

| LABEL   | UNITS | AVG   | MAX  | MIN | AVG/MIN | MAX/MIN |
|---------|-------|-------|------|-----|---------|---------|
| Landing | Fc    | 15.37 | 23.9 | 6.6 | 2.33    | 3.62    |

| STAIRS | UNITS | AVG   | MAX  | MIN  | AVG/MIN | MAX/MIN |
|--------|-------|-------|------|------|---------|---------|
| 1-1    | Fc    | 7.88  | 9.6  | 3.5  | 2.25    | 2.74    |
| 1-10   | Fc    | 13.25 | 15.7 | 6.1  | 2.17    | 2.57    |
| 1-11   | Fc    | 13.11 | 15.3 | 6.2  | 2.11    | 2.47    |
| 1-12   | Fc    | 13.35 | 15.7 | 6.2  | 2.15    | 2.53    |
| 1-13   | Fc    | 12.69 | 14.6 | 6.0  | 2.12    | 2.43    |
| 1-14   | Fc    | 13.20 | 15.3 | 6.4  | 2.06    | 2.39    |
| 1-15   | Fc    | 12.20 | 14.0 | 5.9  | 2.07    | 2.37    |
| 1-16   | Fc    | 12.61 | 14.7 | 6.0  | 2.10    | 2.45    |
| 1-17   | Fc    | 10.50 | 12.3 | 5.0  | 2.10    | 2.46    |
| 1-2    | Fc    | 11.95 | 13.9 | 5.6  | 2.13    | 2.48    |
| 1-3    | Fc    | 13.63 | 15.8 | 6.3  | 2.16    | 2.51    |
| 1-4    | Fc    | 12.95 | 15.0 | 6.2  | 2.09    | 2.42    |
| 1-5    | Fc    | 13.75 | 15.9 | 6.4  | 2.15    | 2.48    |
| 1-6    | Fc    | 13.18 | 15.3 | 6.3  | 2.09    | 2.43    |
| 1-7    | Fc    | 13.74 | 15.9 | 6.8  | 2.02    | 2.34    |
| 1-8    | Fc    | 13.16 | 15.5 | 6.0  | 2.19    | 2.58    |
| 1-9    | Fc    | 13.45 | 15.6 | 6.6  | 2.04    | 2.36    |
| 2-1    | Fc    | 14.94 | 17.7 | 10.8 | 1.38    | 1.64    |
| 2-10   | Fc    | 14.39 | 15.6 | 11.7 | 1.23    | 1.33    |
| 2-11   | Fc    | 15.03 | 16.0 | 12.6 | 1.19    | 1.27    |
| 2-12   | Fc    | 14.31 | 15.8 | 11.8 | 1.21    | 1.34    |
| 2-13   | Fc    | 15.38 | 16.3 | 12.8 | 1.20    | 1.27    |
| 2-14   | Fc    | 13.70 | 15.3 | 11.3 | 1.21    | 1.35    |
| 2-15   | Fc    | 13.03 | 13.8 | 11.0 | 1.18    | 1.25    |
| 2-16   | Fc    | 11.06 | 12.5 | 9.4  | 1.18    | 1.33    |
| 2-2    | Fc    | 15.96 | 17.0 | 13.5 | 1.18    | 1.26    |
| 2-3    | Fc    | 13.85 | 15.6 | 11.2 | 1.24    | 1.39    |
| 2-4    | Fc    | 15.59 | 16.6 | 13.1 | 1.19    | 1.27    |
| 2-5    | Fc    | 14.33 | 15.9 | 11.7 | 1.22    | 1.36    |
| 2-6    | Fc    | 15.21 | 16.3 | 12.6 | 1.21    | 1.29    |
| 2-7    | Fc    | 14.74 | 16.0 | 12.2 | 1.21    | 1.31    |
| 2-8    | Fc    | 14.74 | 15.9 | 12.1 | 1.22    | 1.31    |
| 2-9    | Fc    | 14.94 | 16.1 | 12.6 | 1.19    | 1.28    |



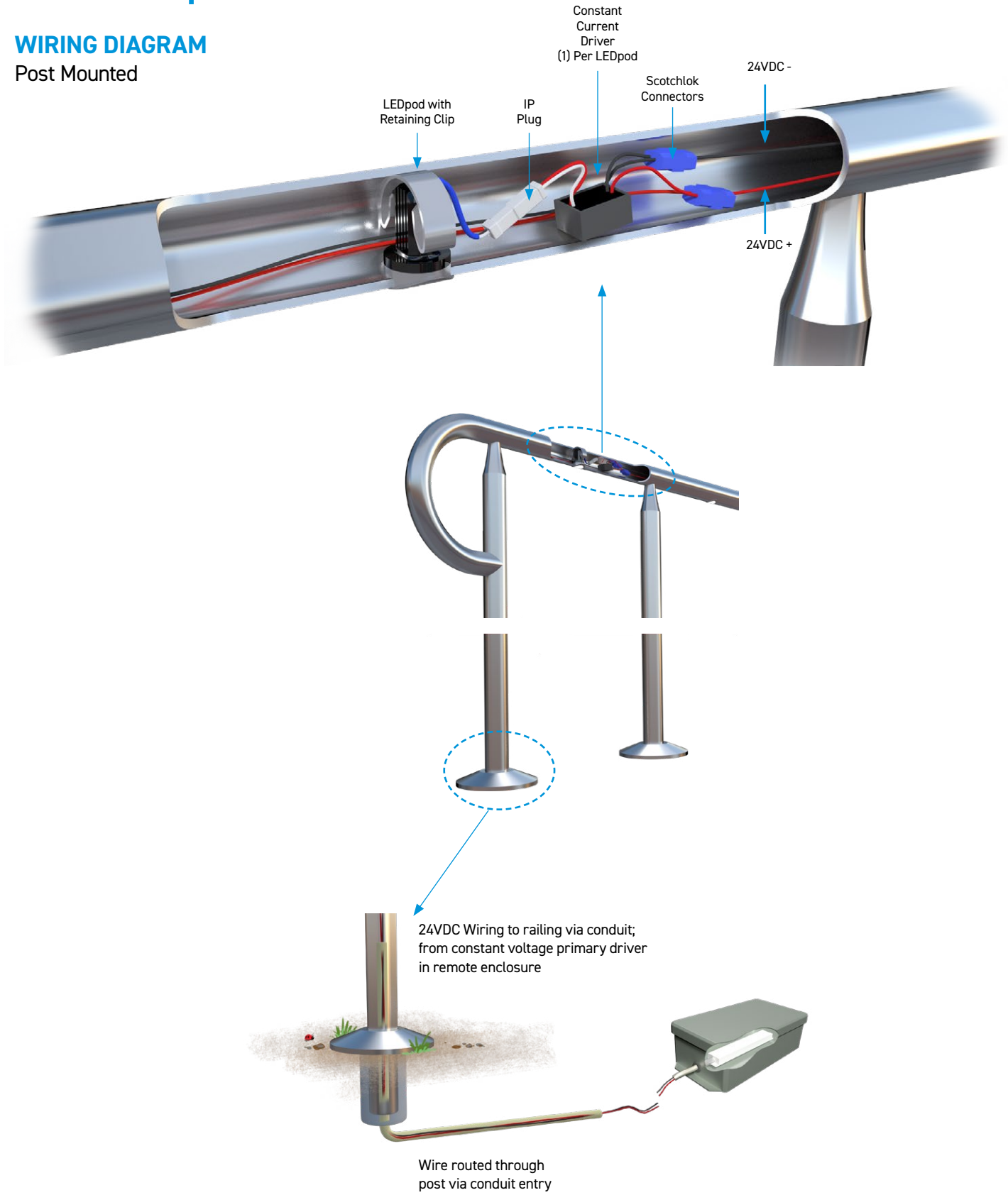
# KLIK LEDpod™ 40 Patented DOUBLE SIDED

## LANDING 1 TOP

|                     |            |                    |          |            |                     |      |      |      |      |      |      |      |      |      |      |      |      |      |                     |      |
|---------------------|------------|--------------------|----------|------------|---------------------|------|------|------|------|------|------|------|------|------|------|------|------|------|---------------------|------|
| 2                   | 5'-11 1/4" | 9.5                | 12.9     | 13.9       | 12.9                | 11.6 | 10.8 | 10.7 | 11.1 | 12.2 | 13.6 | 14.7 | 13.4 | 10.3 |      |      |      |      |                     |      |
|                     |            | 14.3               | 18.9     | 19.9       | 18.5                | 16.6 | 15.4 | 15.2 | 16.0 | 17.7 | 19.9 | 21.4 | 20.0 | 15.7 |      |      |      |      |                     |      |
|                     |            | 16.2               | 20.7     | 21.1       | 18.8                | 16.3 | 14.6 | 14.6 | 16.0 | 18.5 | 21.5 | 23.9 | 22.9 | 17.4 |      |      |      |      |                     |      |
|                     |            | 15.2               | 19.3     | 19.1       | 16.4                | 13.5 | 11.4 | 11.4 | 13.6 | 16.6 | 20.0 | 22.8 | 22.4 | 16.9 |      |      |      |      |                     |      |
|                     |            | 13.6               | 17.3     | 16.8       | 14.4                | 12.1 | 9.6  | 8.4  | 10.7 | 14.0 | 17.1 | 19.8 | 19.7 | 15.0 |      |      |      |      |                     |      |
|                     |            | 12.9               | 16.3     | 15.6       | 13.5                | 11.7 | 9.4  | 6.6  | 7.1  | 11.4 | 14.1 | 16.3 | 16.8 | 10.4 |      |      |      |      |                     |      |
|                     |            | 1.8                | ± 26'-8" | 15'-0 1/2" | STAIRS 1-17 SIDE 66 | 11.0 | 12.2 | 12.3 | 11.1 | 11.1 | 11.9 | 9.4  | 5.0  | 10.8 | 13.7 | 14.7 | 15.2 | 16.5 | 17.7                | 17.6 |
| STAIRS 1-16 SIDE 62 | 11.4       | 14.1               |          |            | 14.7                | 14.4 | 14.3 | 14.2 | 11.8 | 6.0  | 13.7 | 16.5 | 16.7 | 16.6 | 16.8 | 17.0 | 16.9 | 13.5 | STAIRS 2-2 SIDE 8   |      |
| STAIRS 1-15 SIDE 58 | 11.3       | 13.5               |          |            | 14.0                | 13.6 | 13.6 | 13.9 | 11.8 | 5.9  | 11.2 | 15.3 | 15.0 | 13.4 | 13.7 | 15.2 | 15.6 | 11.4 | STAIRS 2-3 SIDE 12  |      |
| STAIRS 1-14 SIDE 54 | 11.6       | 14.5               |          |            | 15.1                | 14.9 | 15.1 | 15.3 | 12.7 | 6.4  | 13.1 | 16.3 | 16.4 | 16.5 | 16.6 | 16.5 | 16.2 | 13.1 | STAIRS 2-4 SIDE 16  |      |
| STAIRS 1-13 SIDE 50 | 11.2       | 13.8               |          |            | 14.6                | 14.5 | 14.6 | 14.6 | 12.2 | 6.0  | 11.7 | 15.8 | 15.6 | 14.0 | 14.2 | 15.5 | 15.9 | 11.9 | STAIRS 2-5 SIDE 20  |      |
| STAIRS 1-12 SIDE 46 | 11.8       | 14.8               |          |            | 15.3                | 15.0 | 15.3 | 15.7 | 12.7 | 6.2  | 12.8 | 15.8 | 16.1 | 16.3 | 16.2 | 16.2 | 15.7 | 12.6 | STAIRS 2-6 SIDE 24  |      |
| STAIRS 1-11 SIDE 42 | 11.5       | 14.1               |          |            | 15.0                | 15.1 | 15.3 | 15.1 | 12.6 | 6.2  | 12.2 | 16.0 | 15.8 | 14.9 | 14.9 | 15.7 | 16.0 | 12.4 | STAIRS 2-7 SIDE 28  |      |
| STAIRS 1-10 SIDE 38 | 11.8       | 14.8               |          |            | 15.3                | 14.8 | 15.0 | 15.7 | 12.5 | 6.1  | 12.4 | 15.2 | 15.7 | 15.6 | 15.6 | 15.9 | 15.4 | 12.1 | STAIRS 2-8 SIDE 32  |      |
| STAIRS 1-9 SIDE 34  | 11.8       | 14.5               |          |            | 15.4                | 15.5 | 15.6 | 15.4 | 12.8 | 6.6  | 12.6 | 16.0 | 15.9 | 15.5 | 15.3 | 15.5 | 16.1 | 12.6 | STAIRS 2-9 SIDE 36  |      |
| STAIRS 1-8 SIDE 30  | 11.8       | 14.8               |          |            | 15.3                | 14.7 | 14.9 | 15.5 | 12.3 | 6.0  | 11.9 | 15.0 | 15.3 | 15.0 | 15.0 | 15.6 | 15.6 | 11.7 | STAIRS 2-10 SIDE 40 |      |
| STAIRS 1-7 SIDE 26  | 12.0       | 14.8               |          |            | 15.6                | 15.8 | 15.9 | 15.8 | 13.2 | 6.8  | 12.8 | 15.8 | 16.0 | 15.7 | 15.6 | 15.8 | 15.9 | 12.6 | STAIRS 2-11 SIDE 44 |      |
| STAIRS 1-6 SIDE 22  | 11.8       | 14.7               |          |            | 15.3                | 14.6 | 14.6 | 15.2 | 12.9 | 6.3  | 11.8 | 15.4 | 15.3 | 14.2 | 14.5 | 15.8 | 15.7 | 11.8 | STAIRS 2-12 SIDE 48 |      |
| STAIRS 1-5 SIDE 18  | 12.2       | 15.1               |          |            | 15.8                | 15.8 | 15.9 | 15.8 | 13.0 | 6.4  | 13.1 | 16.1 | 16.3 | 16.2 | 16.3 | 16.2 | 16.0 | 12.8 | STAIRS 2-13 SIDE 52 |      |
| STAIRS 1-4 SIDE 14  | 11.6       | 14.4               |          |            | 15.0                | 14.6 | 14.5 | 14.8 | 12.5 | 6.2  | 11.3 | 15.1 | 14.8 | 13.2 | 13.6 | 15.0 | 15.3 | 11.3 | STAIRS 2-14 SIDE 56 |      |
| STAIRS 1-3 SIDE 10  | 12.1       | 15.1               |          |            | 15.6                | 15.6 | 15.7 | 15.8 | 12.8 | 6.3  | 11.3 | 13.6 | 13.6 | 13.7 | 13.8 | 13.7 | 13.5 | 11.0 | STAIRS 2-15 SIDE 60 |      |
| STAIRS 1-2 SIDE 6   | 10.5       | 12.9               |          |            | 13.7                | 13.9 | 13.9 | 13.7 | 11.4 | 5.6  | 9.5  | 12.4 | 11.7 | 10.5 | 10.7 | 11.8 | 12.5 | 9.4  | STAIRS 2-16 SIDE 64 |      |
| STAIRS 1-1 SIDE 2   | 6.4        | 8.5                | 9.3      | 9.6        | 9.5                 | 9.2  | 7.0  | 3.5  |      |      |      |      |      |      |      |      |      |      |                     |      |
| 1.2                 | 5'-8 1/4"  |                    |          |            |                     |      |      |      |      |      |      |      |      |      |      |      |      |      |                     |      |
|                     |            | Stair width - 5'8" |          |            |                     |      |      |      |      |      |      |      |      |      |      |      |      |      |                     |      |
| 1                   |            |                    |          |            |                     |      |      |      |      |      |      |      |      |      |      |      |      |      |                     |      |

# KLIK LEDpod™ 40 Patented

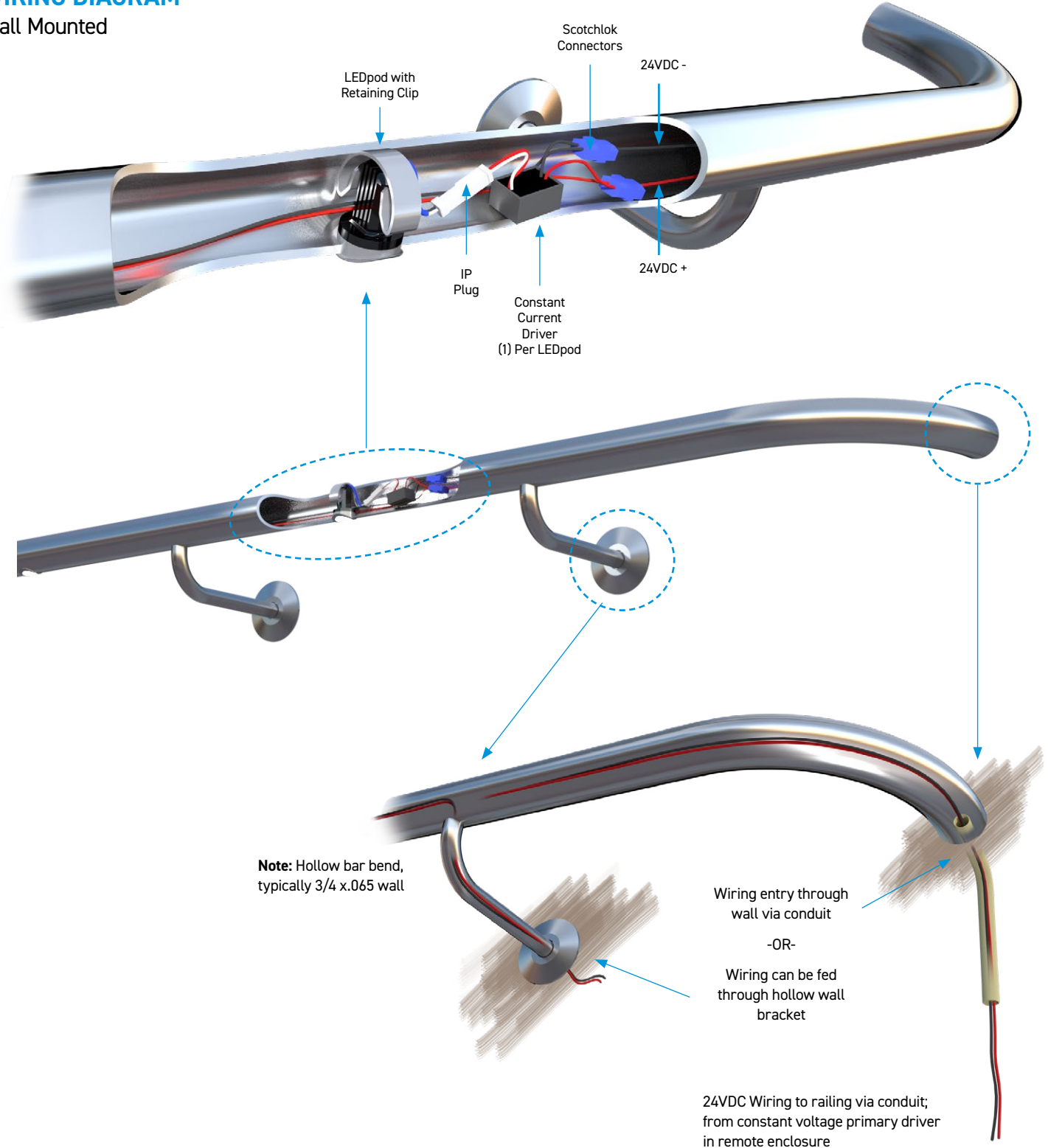
## WIRING DIAGRAM Post Mounted



# KLIK LEDpod™ 40 Patented

## WIRING DIAGRAM

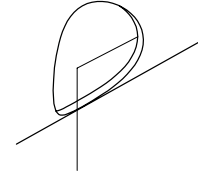
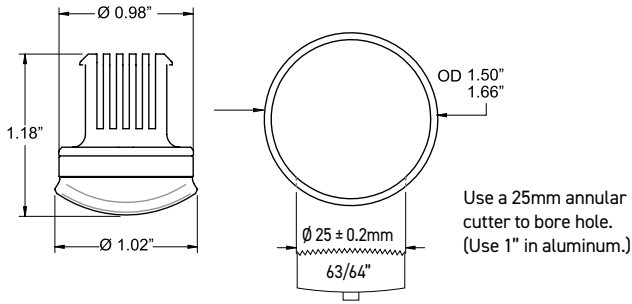
Wall Mounted



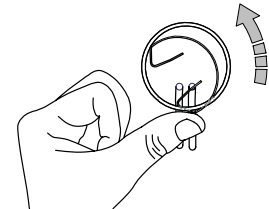
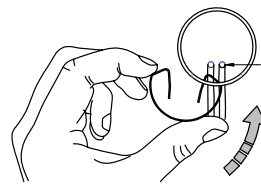
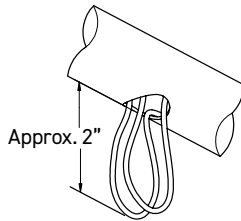
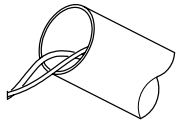


# KLIK LEDpod™ 40 Patented

## INSTALLATION INSTRUCTIONS Additional instructions may apply, consult factory.



- 1 Make sure drilled holes are deburred and excess chips are removed from railing.

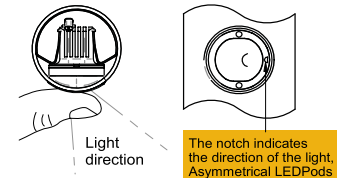
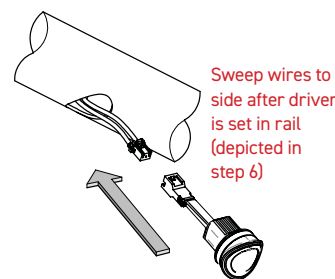
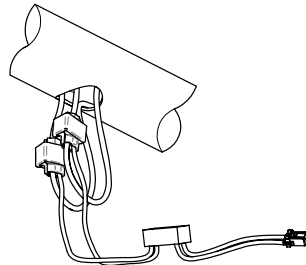
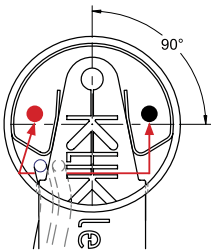


- 2 Feed through appropriate wires (14ga - 18ga).

- 3 Pull a loop of wire through hole.

- 4 Rotate retaining clips in as shown. Avoid tangling or severing through wire.

- 5 Apply pressure as shown to deform clip into place in a circular motion. Avoid damaging the surface of tube and tangling or damaging wire.



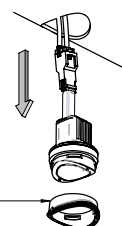
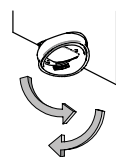
- 6 Fit clip into place until the clamping ends are equally centered over the hole. Use the tool to center the clip until equal pressure can be felt and inspect by eye.

- 7 Install Scotchlok connectors to the red and black wires. Connect the corresponding color wires of the driver to the Scotchloks and assure the clip is secured.

- 8 CAREFULLY feed the Scotchloks to the left of the clip and the driver to the right with the driver connector hanging out. Ensure wires are clear from where the LEDPOD is to fit. Proceed to connect the LEDPOD. Install all LEDpods to this point, then perform a circuit test to ensure all LEDpods are operational BEFORE final installation.

- 9 Push LEDPOD in until it snaps into place and the outer surface is flush with the outer surface of the tube. Prod the rim of the clear silicone IP Seal to provide a tighter fit.

## LEDPOD REMOVAL STEPS



- 1 Insert removal tool into the 2mm holes in the LEDPOD. With firm pressure, rotate the LEDPod 90°.

- 2 Carefully peel back the IP silicone seal one side at a time.

- 3 Carefully remove the LEDPOD from the clip, ensuring not to damage or disconnect wires in the process.