

# AKWAVFLEX-40

## MONO COLOR SPECIFICATION SHEET

Project Name: .....

Specifier: .....

Location: .....

Product Code: .....


**Material:**  
 Silicone

**Impact Rating:**  
 IK08

**Weatherproof Rating:**  
 IP68  
 Wet Location

**Operating Temp:**  
 -40°F - 131°F

**Bending Direction:**  
 Vertical

**UL Listed**

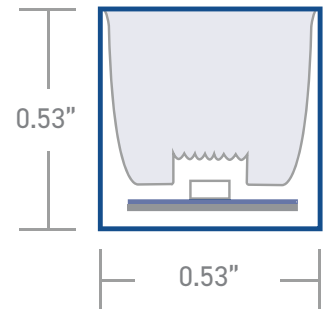
**Beam Angle:**  
 120°

**Dimmable:**  
 0-10V, DMX

**Bend Diameter:**  
 >3.15"

**CRI:**  
 >80+, >90+


AKWA Silicone Resin Encapsulation   Vertical Bend	
Input Voltage	24V
Power Consumption	3.05W/ft
Standard CRI	>80
LEDs per foot/m	44   144
Incremental length in/mm	3.27"   83.3mm



Color Temperature [K]	Lumen Output [lm/ft]
2700K	131lm
3000K	131lm
3500K	137lm
4000K	137lm

Luminaire Options	
Control	0-10V · DMX
Optics	opal symmetrical 120° diffuser
Finish	white
Mounting	surface · wall
Accessories	mounting channel / profile

Due to tolerances of the production process and the electrical components, values for light output, color temperature and electrical power can vary up to 10%.

### How to specify KLIK USA AKWA Flex 40. Example of specification: AF4030K80XX.XBBADIM

Fixture Type	Color Temp [K]	CRI	Nominal Length [feet] with one feed <sup>1,2</sup>	Power Entry Location <sup>3</sup>	Nominal Power Entry Termination	Mounting Profiles & Brackets	Accessories	Control
AF40	27K 2700K 30K 3000K 35K 3500K 40K 4000K R Red G Green B Blue	80 CRI >80+ 90 CRI >90+	XX.X Specify run Length [ft]	B Back one end B2 Back each end E End Plate one end E2 End Plate each end SL Side - Left SR Side - Right SLR Side - Left+Right	B Bare cable with anti-wick ferrule [Std] M Male IP68 Connector F Female IP68 Connector	A AF4010H02 B AF40S02 C AF40S02FLX D AF40S03 E AFSSC40S01-100	- Profile [Std] A AF40ADJ	DIM 0-10V Dim [Std] DMX1 DMX 1 Ch

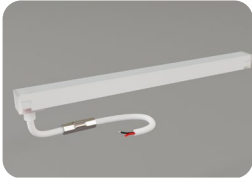
1. Specify length of run

2. Max run length per power entry feed is 27' [8.2m] and 54' [16.4m] for 2 x feeds [one at each end]

3. B2, E2 & SLR only required if exceeding the maximum single power entry as indicated above, thus requiring TWO power entries.

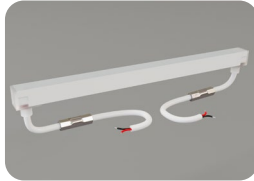
# AKWAVFLEX-40

## POWER ENTRY LOCATIONS



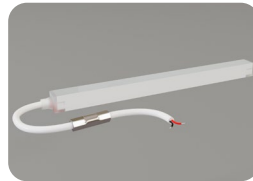
**B**

Power entry from the BACK of the fixture [one end]



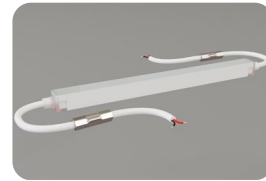
**B2**

Power entry from the BACK of the fixture [both ends] [for fixture length >27']



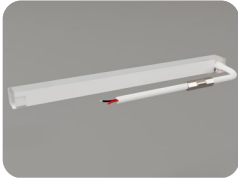
**E**

Power entry from the END of the fixture [one end]



**E2**

Power entry from the END of the fixture [both ends] [for fixture length >27']



**SL**

Power entry from the SIDE of the fixture [LHS]



**SR**

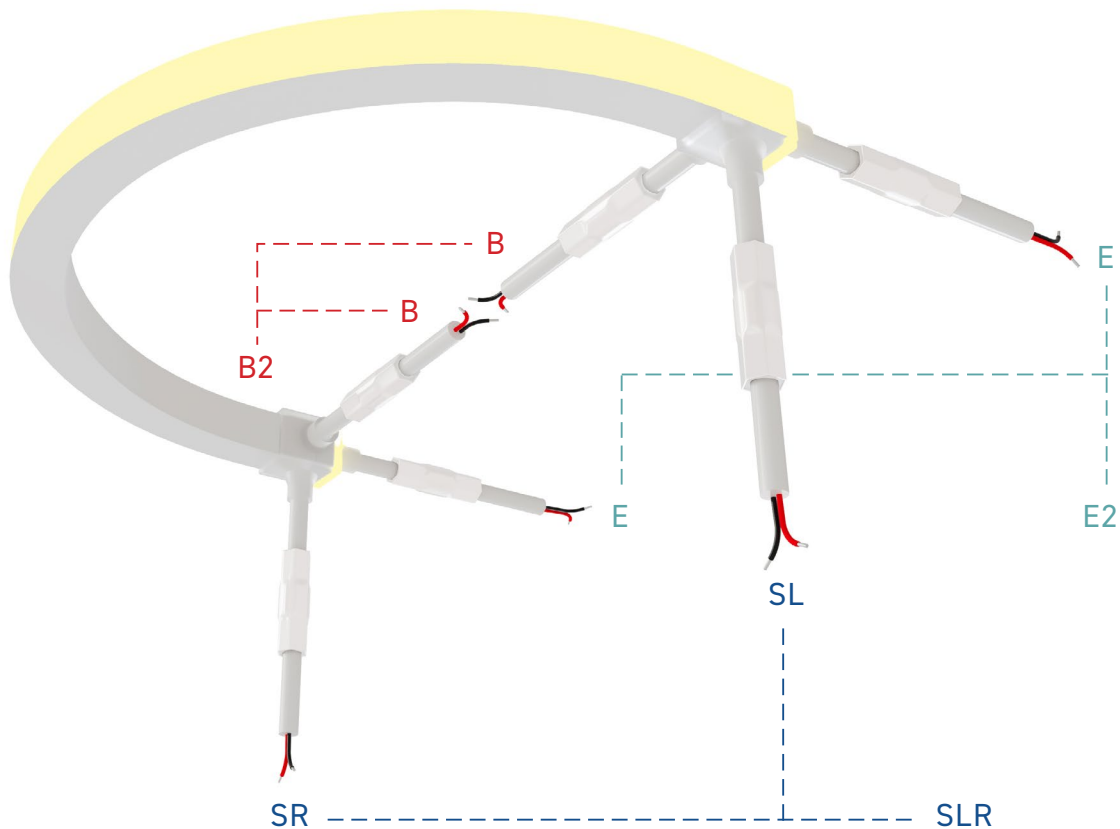
Power entry from the SIDE of the fixture [RHS]



**SLR**

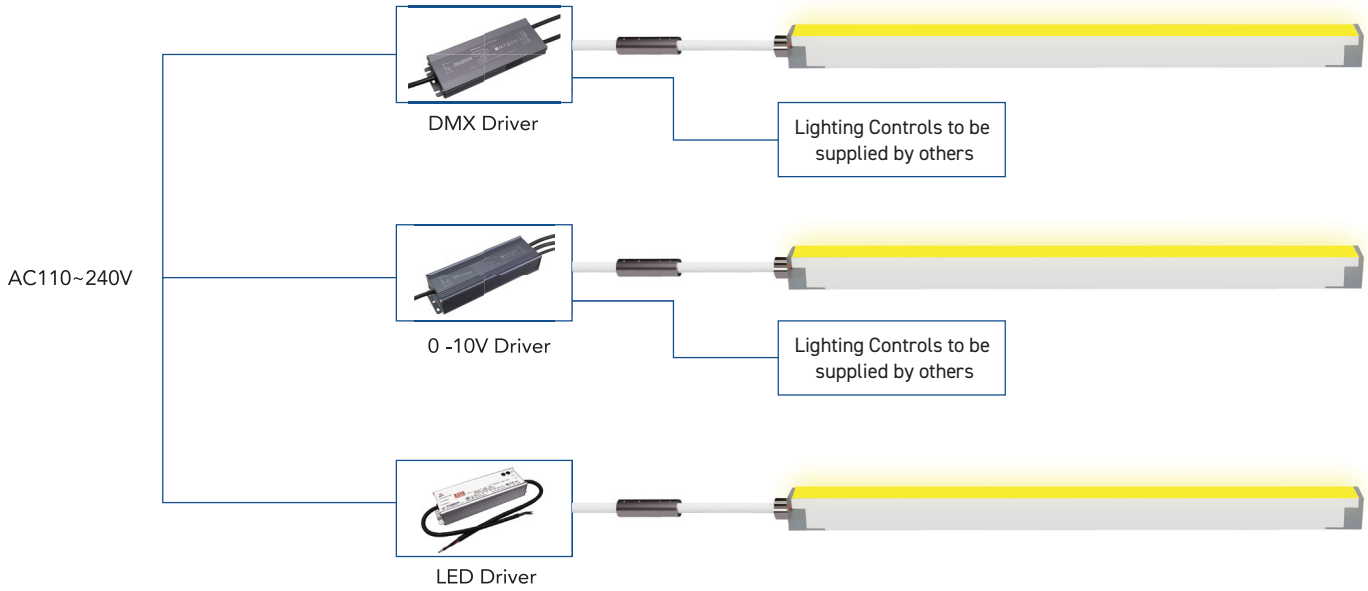
Power entry from the SIDE of the fixture [both L&R] [for fixture length >27']

## POWER ENTRY ORIENTATION



# AKWAVFLEX-40 WIRING DIAGRAM

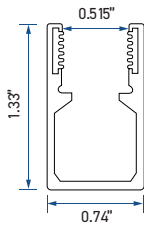
## MONO COLOR



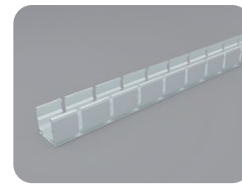
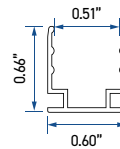
## MOUNTING OPTIONS



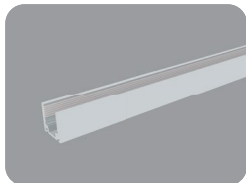
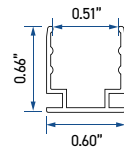
A - AF4010H02



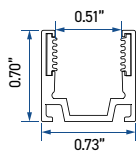
B - AF40S02



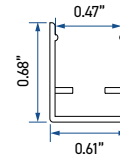
C - AF40S02FLX



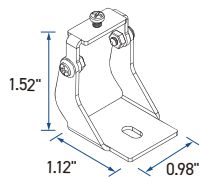
D - AF40S03



E - AFSSC40S01-100



## ACCESSORIES



Adjustable Bracket - A - AF40ADJ