

AKWAVFLEX-80

RGB/W Dynamic SPECIFICATION SHEET

Project Name: _____

Specifier: _____

Location: _____

Product Code: _____



Material:
Silicone



Impact Rating:
IK08



Weatherproof Rating:
IP68
Wet Location



Operating Temp:
-40°F - 131°F



Bending Direction:
Vertical



UL Listed



Beam Angle:
210°



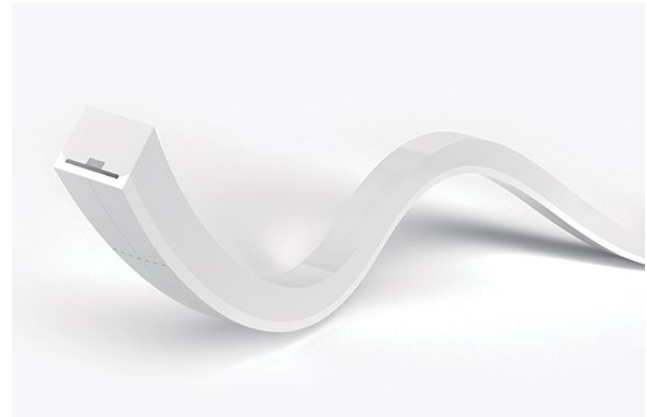
Dimmable:
DMX



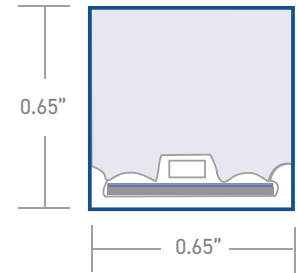
Bend Diameter:
>4.72"



CRI:
>80+



AKWA Silicone Resin Encapsulation Vertical Bend	
Input Voltage	24V
Power Consumption	5.4W/ft
Standard CRI	>80
LEDs per foot/m	21 70
Incremental length in/mm	3.28" 100mm
Pixels per foot/m	3 10



Color Temperature [K]	Lumen Output [lm/ft]
Red	8lm
Green	26lm
Blue	5lm
3000K	29lm

Luminaire options	Mono, tunable white & dim to warm. Refer to specific datasheets for information
Control	DMX
Optics	opal symmetrical 210° [Emits from 3 sides]
Finish	white
Mounting	surface · wall
Accessories	mounting channel / profile

Due to tolerances of the production process and the electrical components, values for light output, color temperature and electrical power can vary up to 10%.

How to specify KLIK USA AKWA Flex 80. **Example of specification:** AF80RGB3XX.XBADYNM

Fixture Type	Color Temp [K]	Nominal Length [feet] with one feed ^{1,2}	Power Entry Location ³	Mounting Profiles & Brackets	Accessories	Control
AF80	RGB3 RGBW[3K] RGB4 RGBW[4K]	XX.X Specify run Length [ft]	B Back one end B2 Back each end E End Plate one end E2 End Plate each end SL Side - Left SLR Side - Left+Right	A AFPC80S02-T B AF80008	- Profile [Std] A AF80ADJ	DYNM DMX Dynamic

1. Specify length of run

2. Max run length per power entry feed is 16' [4.9m] and 32' [9.8m] for two x feeds [one at each end].

3. B, B2, E2 & SLR only required if exceeding the maximum single power entry as indicated above, thus requiring TWO power entries.

AKWAVFLEX-80

POWER ENTRY LOCATIONS



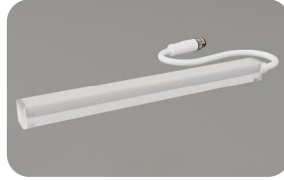
B

Power entry from the BACK of the fixture [one end]



B2

Power entry from the BACK of the fixture [both ends] [for fixture length >16']



E

Power entry from the END of the fixture [one end]



E2

Power entry from the END of the fixture [both ends] [for fixture length >16']



SL

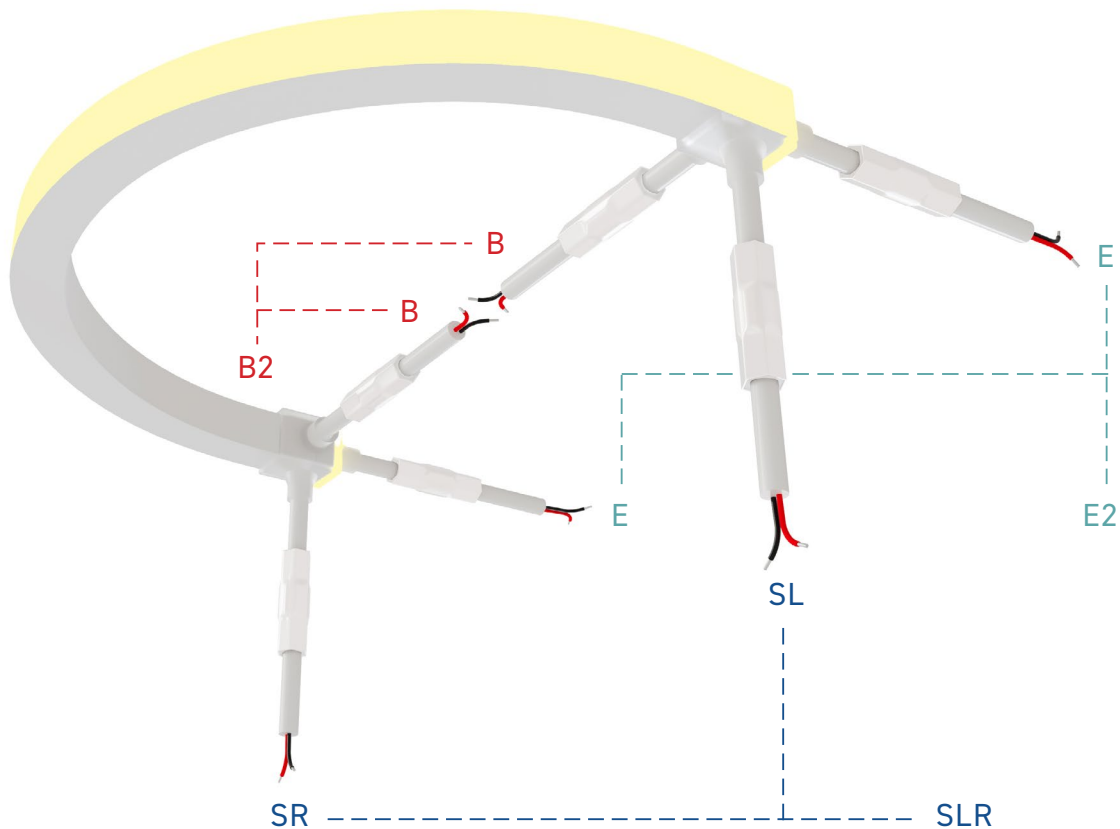
Power entry from the SIDE of the fixture [LHS]



SLR

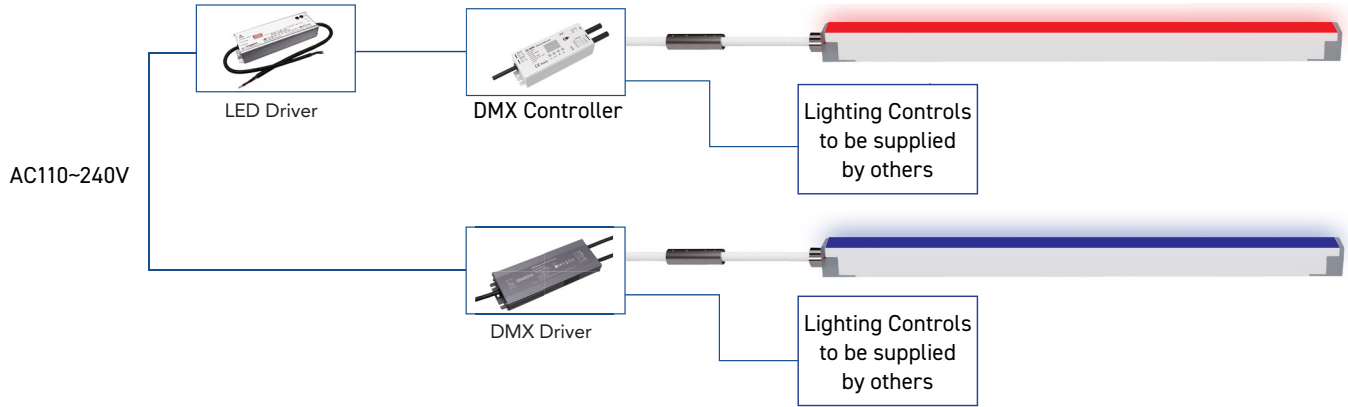
Power entry from the SIDE of the fixture [both L&R] [for fixture length >16']

POWER ENTRY ORIENTATION

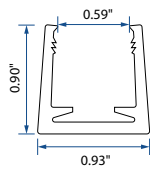
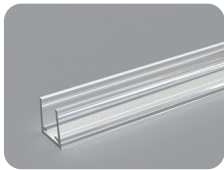


AKWAVFLEX-80 WIRING DIAGRAMS

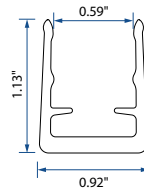
RGBW DYNAMIC



MOUNTING OPTIONS

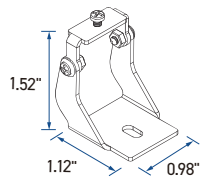


A - AFPC80S02-T



B - AF80008

ACCESSORIES



Adjustable Bracket - A - AF80ADJ