

# AKWAVFLEX-60S

## MONO COLOR - SAUNA SPECIFICATION SHEET

Project Name: .....

Specifier: .....

Location: .....

Product Code: .....



**Material:**  
Silicone



**Impact Rating:**  
IK08



**Weatherproof Rating:**  
IP68 Wet Location  
Can operate in 100% humid conditions.



**Operating Temp:**  
-40°F - 212°F  
Built in thermal IC to limit operation and eliminate thermal overload at temperatures above 212°F [100°C].



**Bending Direction:**  
Vertical



**UL Listed**



**Beam Angle:**  
120°



**Dimmable:**  
0-10V, DMX



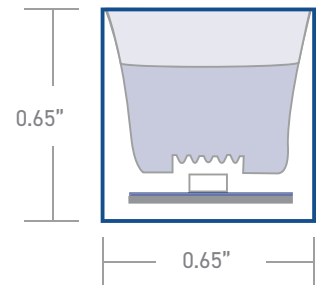
**Bend Diameter:**  
>4.72"



**CRI:**  
>80+, >90+



AKWA Silicone Resin Encapsulation   Vertical Bend	
Input Voltage	24V
Power Consumption	3.0W/ft
Standard CRI	>80
LEDs per foot/m	37   120
Incremental length in/mm	3.93"   100mm



Color Temperature [K]	Lumen Output [lm/ft]
2700K	108lm
3000K	110lm
3500K	101lm
4000k	95lm

Luminaire options	RGB/W, tunable white, dim to warm. Refer to specific datasheets for information
Control	0-10V · DMX
Optics	opal symmetrical 120° diffuser
Finish	white
Mounting	surface · wall · recessed
Accessories	mounting channel / profile

Due to tolerances of the production process and the electrical components, values for light output, color temperature and electrical power can vary up to 10%.

### How to specify KLIK USA AKWA Flex 60. Example of specification: AF60S30K80XX.XBBADIM

Fixture Type	Color Temp [K]	CRI	Nominal Length [feet] with one feed <sup>1,2</sup>	Power Entry Location <sup>3</sup>	Nominal Power Entry Termination	Mounting Profiles & Brackets	Accessories	Control
AF60S	27K 2700K 30K 3000K 35K 3500K 40K 4000K A Amber [590nm] R Red G Green B Blue	80 CRI >80+ 90 CRI >90+	XX.X Specify run Length [ft]	B Back one end B2 Back each end E End Plate one end E2 End Plate each end SL Side - Left SR Side- Right SLR Side - Left+Right L Back L Shape one end L2 Back L Shape each end	B Bare cable with anti-wick ferrule [Std] M Male IP68 Connector F Female IP68 Connector	A AF60S02 B AF60S07 C AF60S08 D AF60H02 E AFPC60S02-T F AFSS60S01-05 G AFSSC60FLX H AFSSC60S02-100 I AF60S05FLX J AF60S08FLX	- Profile [Std] A AF60ADJ	DIM 0-10V Dim [Std] DMX1 DMX 1 Ch

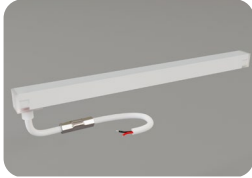
1. Specify length of run

2. Max run length per power entry feed is 28' [8.5m], 56' [17m] for two x feeds [one at each end].

3. B2, L2, E2 & SLR2 only required if exceeding the maximum single power entry as indicated above, thus requiring TWO power entries.

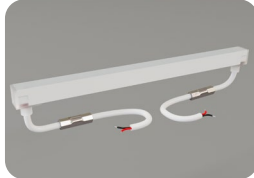
# AKWAV FLEX-60S

## POWER ENTRY LOCATIONS



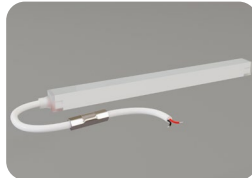
**B**

Power entry from the BACK of the fixture [one end]



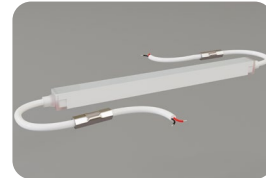
**B2**

Power entry from the BACK of the fixture [both ends] [for fixture length >28']



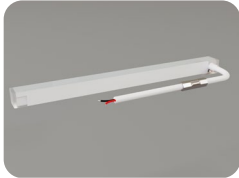
**E**

Power entry from the END of the fixture [one end]



**E2**

Power entry from the END of the fixture [both ends] [for fixture length >28']



**SL**

Power entry from the SIDE of the fixture [LHS]



**SR**

Power entry from the SIDE of the fixture [RHS]



**SLR**

Power entry from the SIDE of the fixture [both L&R] [for fixture length >28']



**L**

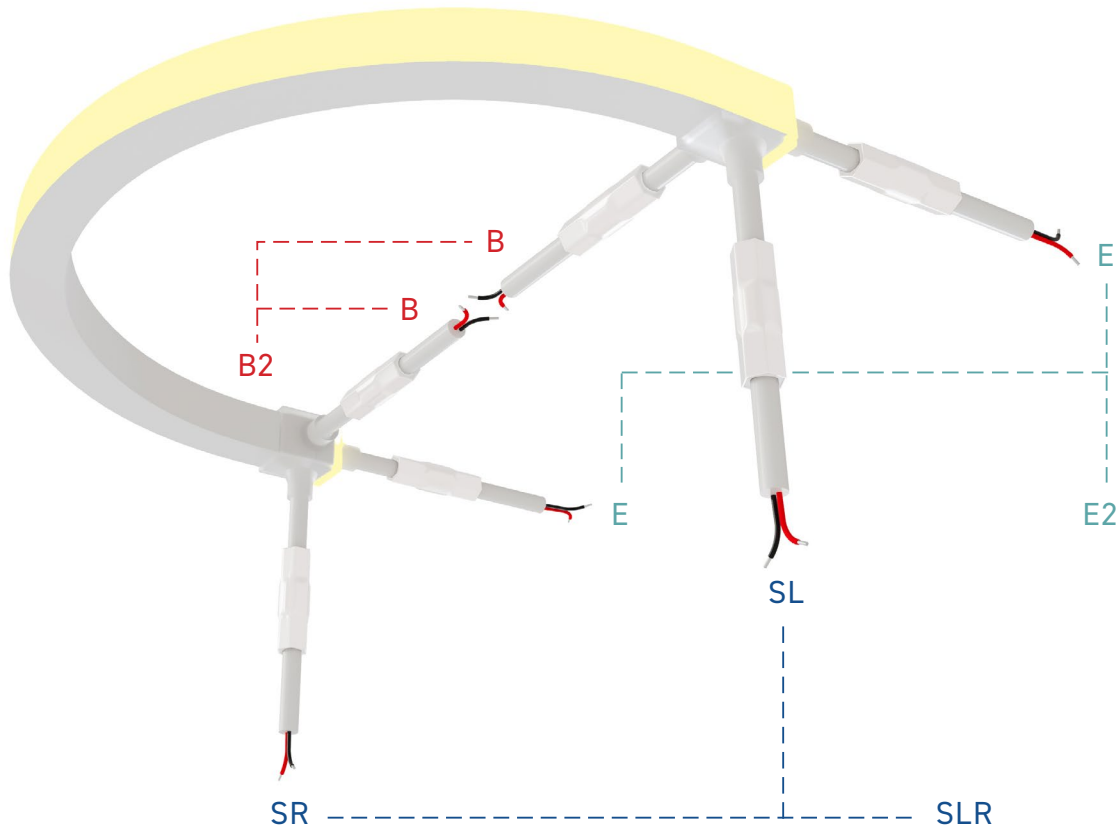
Power entry from the back-L Shape of the fitting [one end]



**L2**

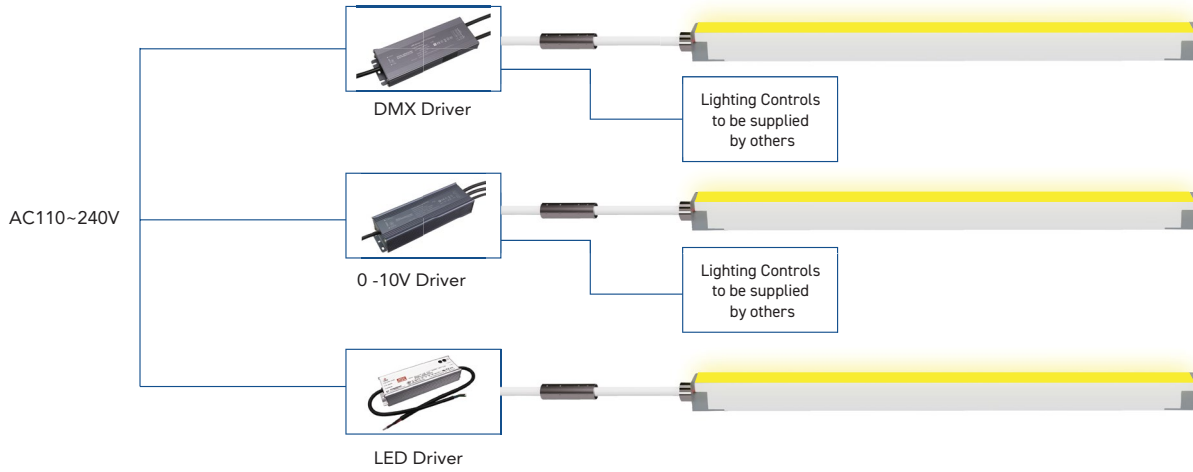
Power entry from the back-L Shape of the fitting [both ends]

## POWER ENTRY ORIENTATION



# AKWAV FLEX-60S WIRING DIAGRAM

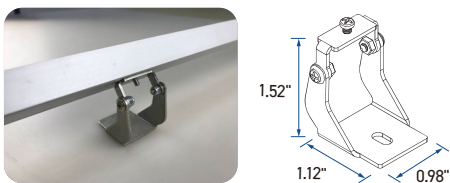
## MONO COLOR



## MOUNTING OPTIONS

A - AF60S02		B - AF60S07		C - AF60S08	
D - AF60H02		E - AFPC60S02-T		F - AFPSS60S01-05	
G - AFSSC60FLX		H - AFSSC60S02-100		I - AF60S05FLX	
J - AF60S08FLX					

## ACCESSORIES



Adjustable Bracket - A - AF60ADJ