

# AKWAVFLEX-60S

## MONO COLOR - SAUNA SPECIFICATION SHEET

Project Name: .....

Specifier: .....

Location: .....

Product Code: .....


**Material:**  
 Silicone

**Impact Rating:**  
 IK08

**Weatherproof Rating:**  
**IP68 Wet Location**  
 Can operate in 100% humid conditions.

**Operating Temp:**  
**-40°F - 212°F**  
 Built in thermal IC to limit operation and eliminate thermal overload at temperatures above 212°F [100°C].

**Bending Direction:**  
 Vertical

**UL Listed**

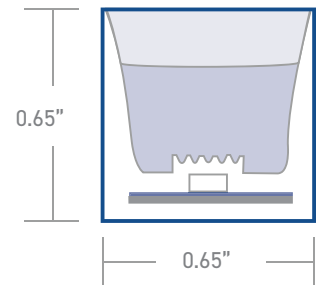
**Beam Angle:**  
 120°

**Dimmable:**  
 0-10V, DMX

**Bend Diameter:**  
 >4.72"

**CRI:**  
 >80+, >90+


AKWA Silicone Resin Encapsulation   Vertical Bend	
Input Voltage	24V
Power Consumption	3.0W/ft
Standard CRI	>80
LEDs per foot/m	37   120
Incremental length in/mm	3.93"   100mm



Color Temperature [K]	Lumen Output [lm/ft]
2700K	108lm
3000K	110lm
3500K	101lm
4000k	95lm

Luminaire options	Dim to warm - refer to specific datasheets for information
Control	0-10V · DMX
Optics	opal symmetrical 120° diffuser
Finish	white
Mounting	surface · wall · recessed
Accessories	mounting channel / profile

Due to tolerances of the production process and the electrical components, values for light output, color temperature and electrical power can vary up to 10%.

 How to specify KLIK USA AKWA Flex 60S. [Example of specification: AF60S30K80XX.XBBADIM](#)

Fixture Type	Color Temp [K]	CRI	Nominal Length [feet] with one feed <sup>1,2</sup>	Power Entry Location <sup>3</sup>	Nominal Power Entry Termination	Mounting Profiles & Brackets	Accessories	Control
AF60S	<b>27K</b> 2700K <b>30K</b> 3000K <b>35K</b> 3500K <b>40K</b> 4000K <b>A</b> Amber [590nm] <b>R</b> Red <b>G</b> Green <b>B</b> Blue	<b>80</b> CRI >80+ <b>90</b> CRI >90+	<b>XX.X</b> Specify run Length [ft]	<b>B</b> Back one end <b>B2</b> Back each end <b>E</b> End Plate one end <b>E2</b> End Plate each end <b>SL</b> Side - Left <b>SR</b> Side - Right <b>SLR</b> Side - Left+Right <b>L</b> Back L Shape one end <b>L2</b> Back L Shape each end	<b>B</b> Bare cable with anti-wick ferrule [Std] <b>M</b> Male IP68 Connector <b>F</b> Female IP68 Connector	<b>A</b> AF60S02 <b>B</b> AF60S07 <b>C</b> AF60S08 <b>D</b> AF60H02 <b>E</b> AFPC60S02-T <b>F</b> AFSS60S01-05 <b>G</b> AFSSC60FLX <b>H</b> AFSSC60S02-100 <b>I</b> AF60S05FLX <b>J</b> AF60S08FLX	- Profile [Std] <b>A</b> AF60ADJ	<b>DIM</b> 0-10V Dim [Std] <b>DMX1</b> DMX 1 Ch

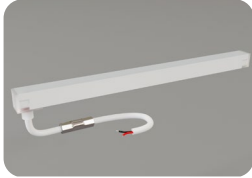
1. Specify length of run

2. Max run length per power entry feed is 28' [8.5m], 56' [17m] for two x feeds [one at each end].

3. B2, L2, E2 &amp; SLR2 only required if exceeding the maximum single power entry as indicated above, thus requiring TWO power entries.

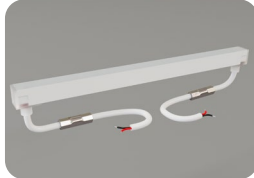
# AKWAV FLEX-60S

## POWER ENTRY LOCATIONS



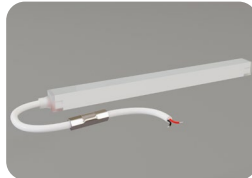
**B**

Power entry from the BACK of the fixture [one end]



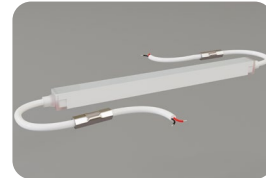
**B2**

Power entry from the BACK of the fixture [both ends] [for fixture length >28']



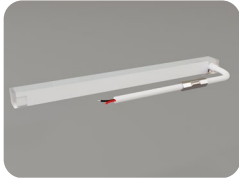
**E**

Power entry from the END of the fixture [one end]



**E2**

Power entry from the END of the fixture [both ends] [for fixture length >28']



**SL**

Power entry from the SIDE of the fixture [LHS]



**SR**

Power entry from the SIDE of the fixture [RHS]



**SLR**

Power entry from the SIDE of the fixture [both L&R] [for fixture length >28']



**L**

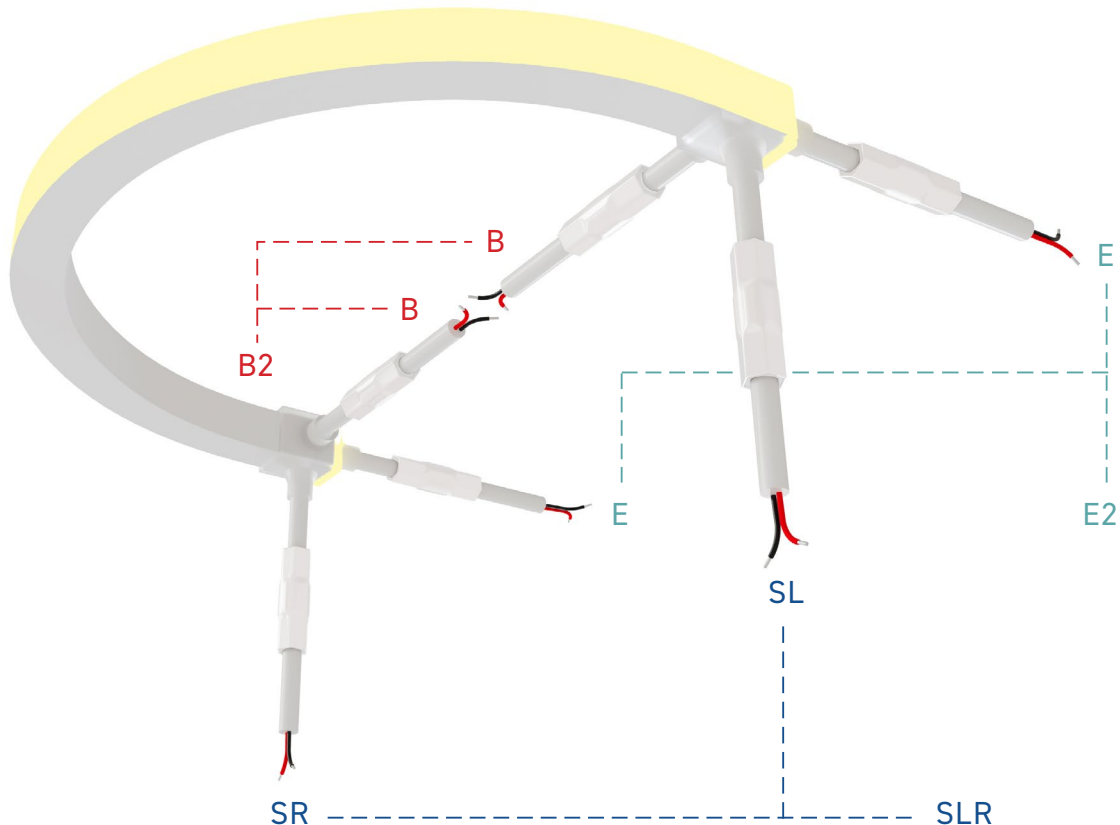
Power entry from the back-L Shape of the fitting [one end]



**L2**

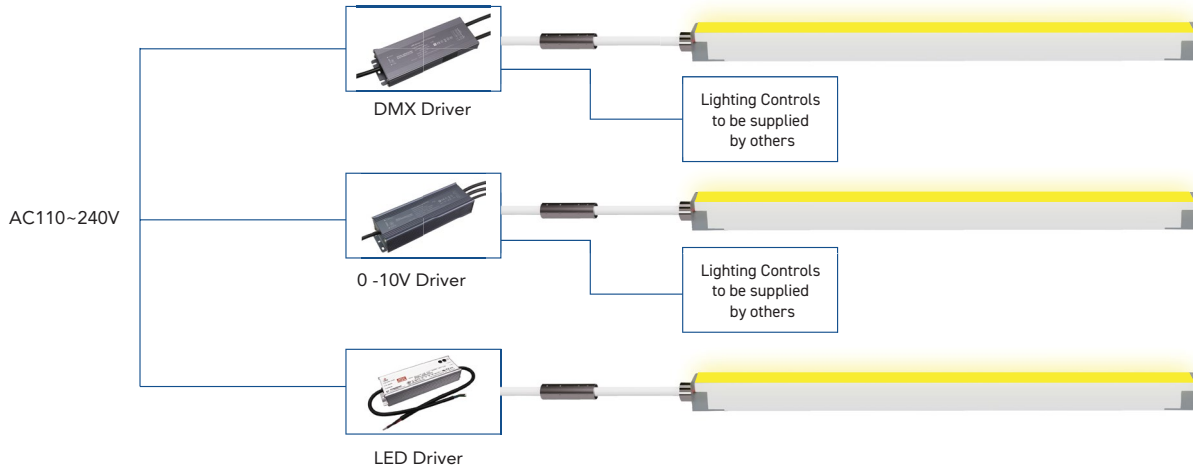
Power entry from the back-L Shape of the fitting [both ends]

## POWER ENTRY ORIENTATION



# AKWAV FLEX-60S WIRING DIAGRAM

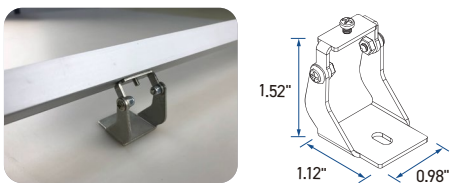
## MONO COLOR



## MOUNTING OPTIONS

<p>A - AF60S02</p>		<p>B - AF60S07</p>		<p>C - AF60S08</p>	
<p>D - AF60H02</p>		<p>E - AFPC60S02-T</p>		<p>F - AFPSS60S01-05</p>	
<p>G - AFSSC60FLX</p>		<p>H - AFSSC60S02-100</p>		<p>I - AF60S05FLX</p>	
<p>J - AF60S08FLX</p>					

## ACCESSORIES



Adjustable Bracket - A - AF60ADJ