

AKWAVFLEX-60S

DIM TO WARM - SAUNA SPECIFICATION SHEET

Project Name:

Specifier:

Location:

Product Code:


Material:
 Silicone

Impact Rating:
 IK08

Weatherproof Rating:
IP68 Wet Location
 Can operate in 100% humid conditions.

Operating Temp:
-40°F - 212°F
 Built in thermal IC to limit operation and eliminate thermal overload at temperatures above 212°F [100°C].

Bending Direction:
 Vertical

UL Listed

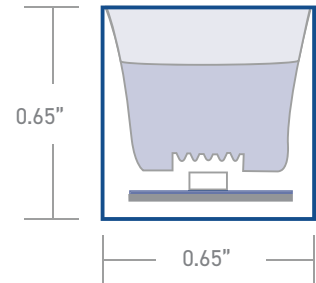
Beam Angle:
 120°

Dimmable:
 0-10V, DMX

Bend Diameter:
 >4.72"

CRI:
 >80+, >90+


AKWA Silicone Resin Encapsulation Vertical Bend	
Input Voltage	24V
Power Consumption	1.5W/ft
Standard CRI	>80
LEDs per foot/m	37 120
Incremental length in/mm	3.93" 100mm



Color Temperature [K]	Lumen Output [lm/ft]
2700K	54lm
3000K	55lm
3500K	50lm
4000k	47lm

Luminaire options	Mono - refer to specific datasheets for information
Control	0-10V · DMX
Optics	opal symmetrical 120° diffuser
Finish	white
Mounting	surface · wall · recessed
Accessories	mounting channel / profile

Due to tolerances of the production process and the electrical components, values for light output, color temperature and electrical power can vary up to 10%.

How to specify KLIK USA AKWA Flex 60S. Example of specification: AF60S30K80XX.XBBADIM

Fixture Type	Color Temp [K]	CRI	Nominal Length [feet] with one feed ^{1,2}	Power Entry Location ³	Nominal Power Entry Termination	Mounting Profiles & Brackets	Accessories	Control
AF60S	27K 2700K 30K 3000K 35K 3500K 40K 4000K A Amber [590nm] R Red G Green B Blue	80 CRI >80+ 90 CRI >90+	XX.X Specify run Length [ft]	B Back one end B2 Back each end E End Plate one end E2 End Plate each end SL Side - Left SR Side- Right SLR Side - Left+Right L Back L Shape one end L2 Back L Shape each end	B Bare cable with anti-wick ferrule [Std] M Male IP68 Connector F Female IP68 Connector	A AF60S02 B AF60S07 C AF60S08 D AF60H02 E AFPC60S02-T F AFSS60S01-05 G AFSSC60FLX H AFSSC60S02-100 I AF60S05FLX J AF60S08FLX	- Profile [Std] A AF60ADJ	DIM 0-10V Dim [Std] DMX1 DMX 1 Ch

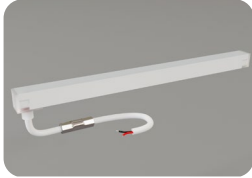
1. Specify length of run

2. Max run length per power entry feed is 28' [8.5m], 56' [17m] for two x feeds [one at each end].

3. B2, L2, E2 & SLR2 only required if exceeding the maximum single power entry as indicated above, thus requiring TWO power entries.

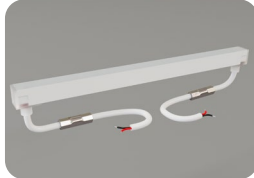
AKWAV FLEX-60S

POWER ENTRY LOCATIONS



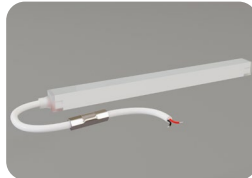
B

Power entry from the BACK of the fixture [one end]



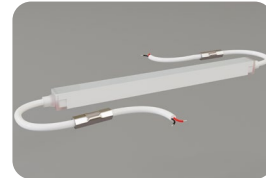
B2

Power entry from the BACK of the fixture [both ends] [for fixture length >28']



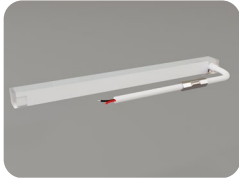
E

Power entry from the END of the fixture [one end]



E2

Power entry from the END of the fixture [both ends] [for fixture length >28']



SL

Power entry from the SIDE of the fixture [LHS]



SR

Power entry from the SIDE of the fixture [RHS]



SLR

Power entry from the SIDE of the fixture [both L&R] [for fixture length >28']



L

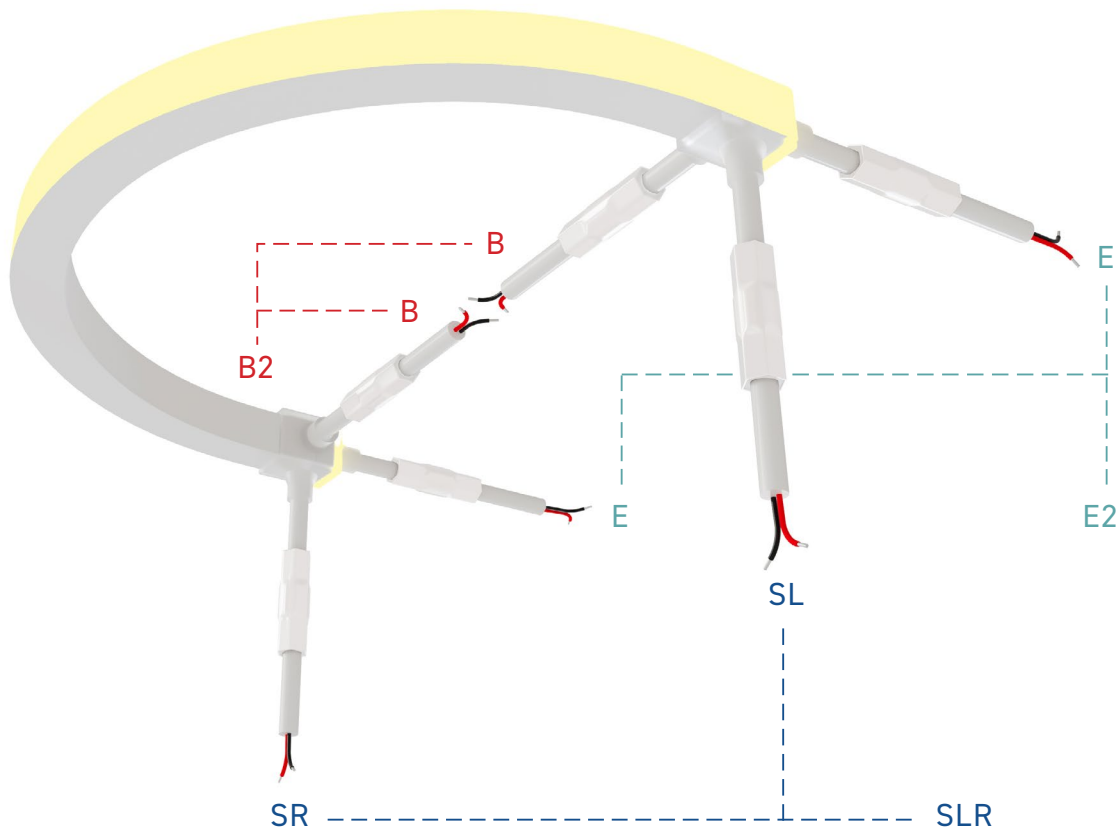
Power entry from the back-L Shape of the fitting [one end]



L2

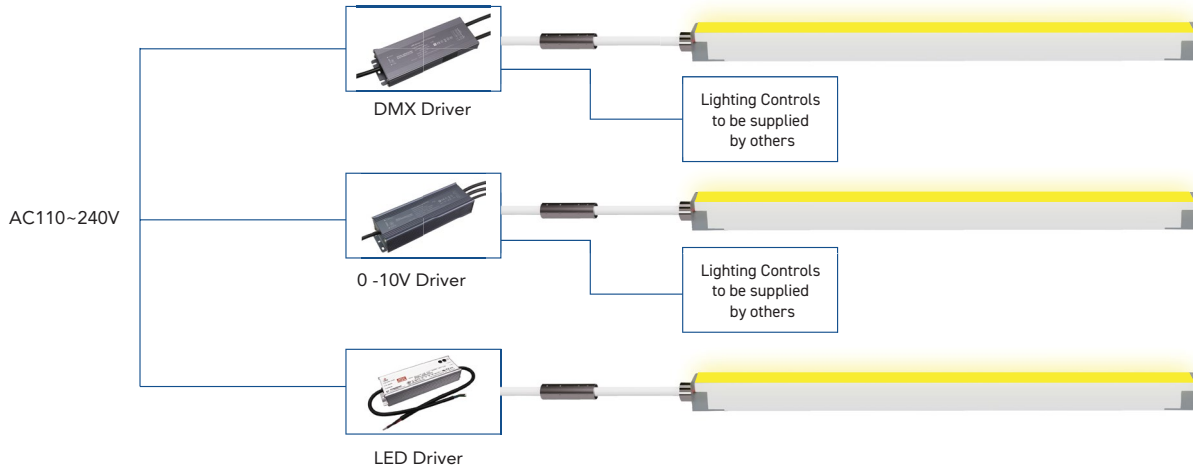
Power entry from the back-L Shape of the fitting [both ends]

POWER ENTRY ORIENTATION



AKWAV FLEX-60S WIRING DIAGRAM

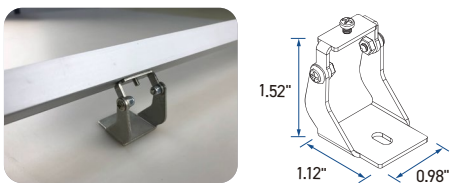
MONO COLOR



MOUNTING OPTIONS

	<p>0.64" 0.77" 0.80"</p>		<p>1.26" 0.64" 0.90" 0.87"</p>		<p>0.64" 0.82" 0.87"</p>
A - AF60S02		B - AF60S07		C - AF60S08	
	<p>0.64" 1.33" 0.87"</p>		<p>0.59" 0.90" 0.93"</p>		<p>0.59" 0.79" 0.76"</p>
D - AF60H02		E - AFPC60S02-T		F - AFPSS60S01-05	
	<p>0.63" 0.86" 0.71"</p>		<p>0.67" 0.80" 0.73"</p>		<p>0.63" 0.78" 0.80"</p>
G - AFSSC60FLX		H - AFSSC60S02-100		I - AF60S05FLX	
	<p>0.64" 0.82" 0.87"</p>				
J - AF60S08FLX					

ACCESSORIES



Adjustable Bracket - A - AF60ADJ