

AKWAVFLEX-60

RGBW Dynamic SPECIFICATION SHEET

Project Name:

Specifier:

Location:

Product Code:


Material:
 Silicone

Impact Rating:
 IK08

Weatherproof Rating:
 IP68
 Wet Location

Operating Temp:
 -40°F - 131°F

Bending Direction:
 Vertical

UL Listed

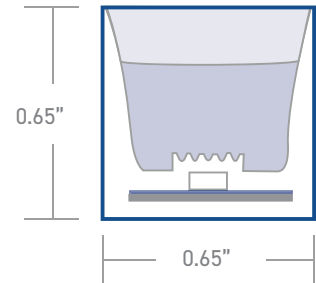
Beam Angle:
 120°

Dimmable:
 DMX

Bend Diameter:
 >4.72"

CRI:
 >80+


| AKWA Silicone Resin Encapsulation Vertical Bend | |
|---|---------------|
| Input Voltage | 24V |
| Power Consumption | 5.5W/ft |
| Standard CRI | >80 |
| LEDs per foot/m | 21 70 |
| Incremental length in/mm | 3.39" 100mm |
| Pixels per foot/m | 3 10 |



| Color Temperature [K] | Lumen Output [lm/ft] |
|-----------------------|----------------------|
| Red | 18lm |
| Green | 54lm |
| Blue | 10lm |
| 3000K | 59lm |

| | |
|--------------------------|---|
| Luminaire options | Mono, tunable white & dim to warm. Refer to specific datasheets for information |
| Control | DMX |
| Optics | opal symmetrical 120° diffuser |
| Finish | white |
| Mounting | surface · wall · recessed |
| Accessories | mounting channel / profile |

Due to tolerances of the production process and the electrical components, values for light output, color temperature and electrical power can vary up to 10%.

How to specify KLIK USA AKWA Flex 60. Example of specification: AF60RGB3XX.XBADYNM

| Fixture Type | Color Temp [K] | Nominal Length [feet] with one feed ^{1,2} | Power Entry Location ³ | Mounting Profiles & Brackets | Accessories | Control |
|--------------|--|--|---|---|-------------------------------------|-------------------------|
| AF60 | RGB3 RGBW[3K] RGB4 RGBW[4K] | XX.X Specify run Length [ft] | B Back one end B2 Back each end E End Plate one end E2 End Plate each end SL Side - Left SLR Side - Left+Right L Back L Shape one end L2 Back L Shape each end | A AF60S02 B AF60S07 C AF60S08 D AF60H02 E AFPC60S02-T F AFSS60S01-05 G AFSSC60FLX H AFSSC60S02-100 I AF60S05FLX J AF60S08FLX | - Profile [Std] A AF60ADJ | DYNM DMX Dynamic |

1. Specify length of run

2. Max run length per power entry feed is 15' [4.60m] and 30' [9.2m] for two x feeds [one at each end].

3. B2, L2, E2 & SLR2 only required if exceeding the maximum single power entry as indicated above, thus requiring TWO power entries.

AKWAVFLEX-60

POWER ENTRY LOCATIONS



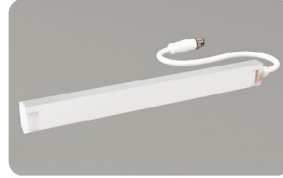
B

Power entry from the BACK of the fixture [one end]



B2

Power entry from the BACK of the fixture [both ends] [for fixture length >15']



E

Power entry from the END of the fixture [one end]



E2

Power entry from the END of the fixture [both ends] [for fixture length >15']



SL

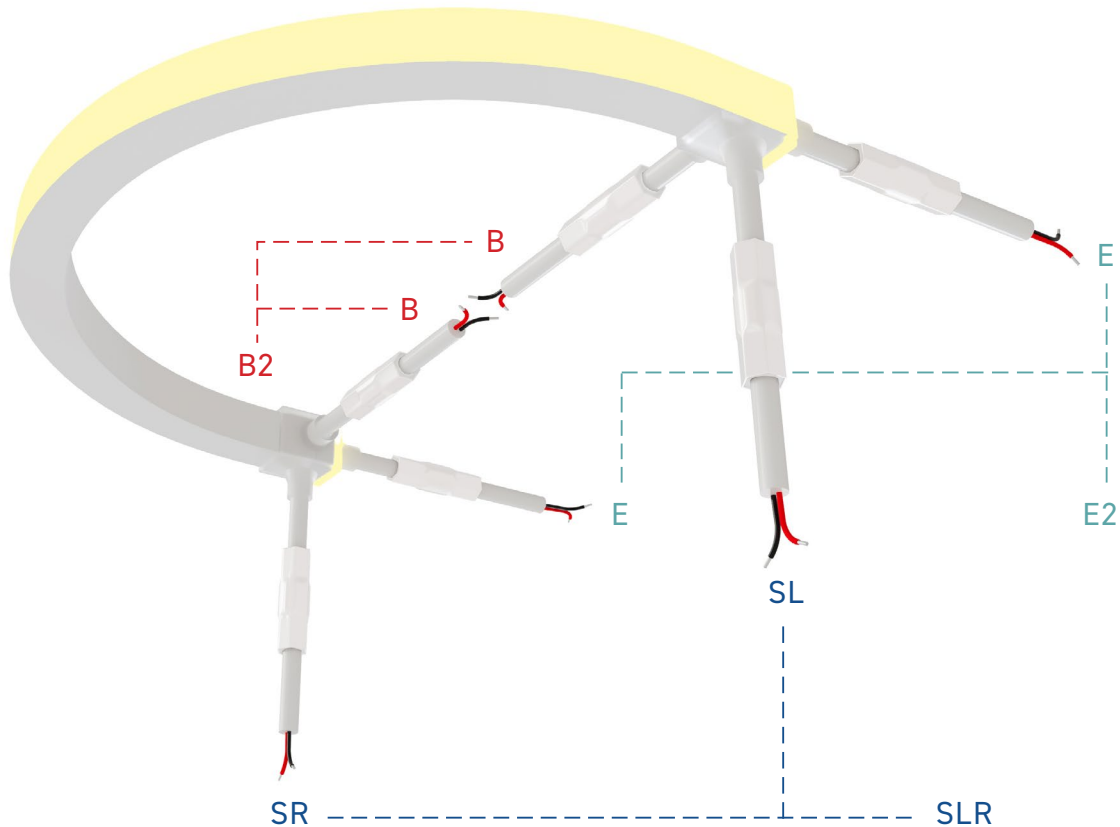
Power entry from the SIDE of the fixture [LHS]



SLR

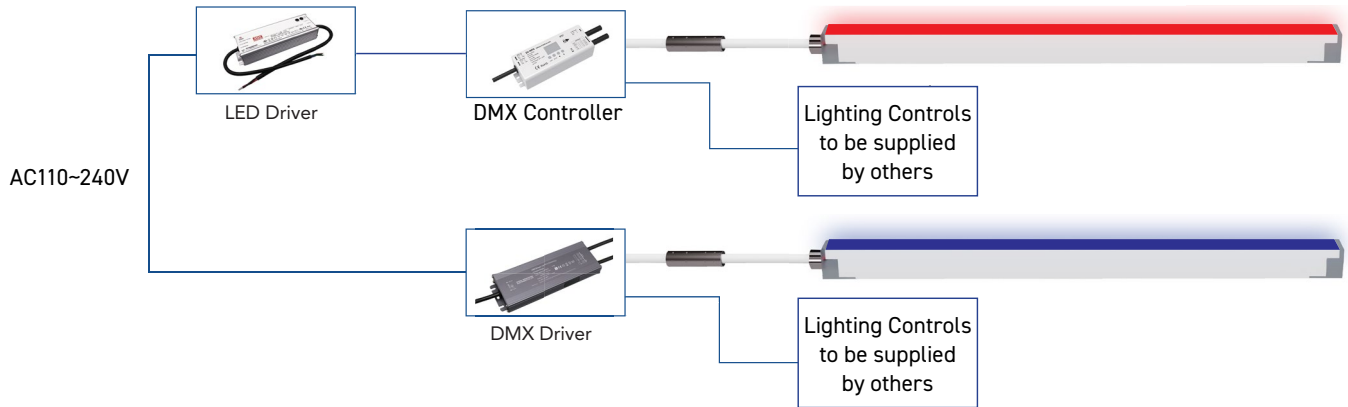
Power entry from the SIDE of the fixture [both L&R] [for fixture length >15']

POWER ENTRY ORIENTATION

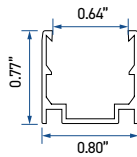


AKWAVFLEX-60 WIRING DIAGRAM

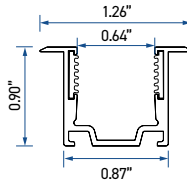
RGBW DYNAMIC



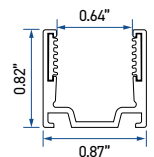
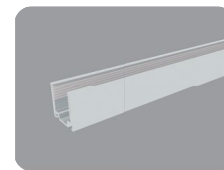
MOUNTING OPTIONS



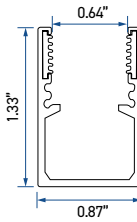
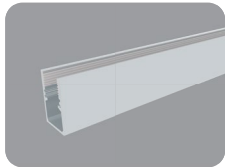
A - AF60S02



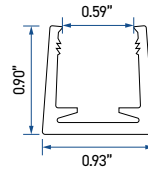
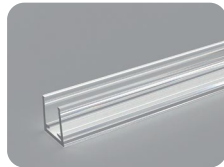
B - AF60S07



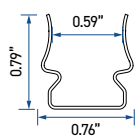
C - AF60S08



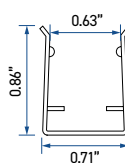
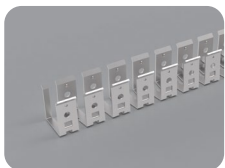
D - AF60H02



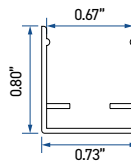
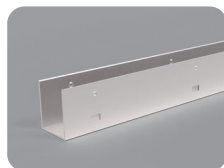
E - AFPC60S02-T



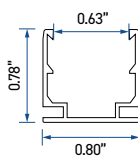
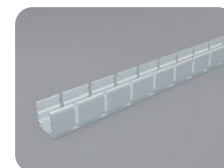
F - AFPSS60S01-05



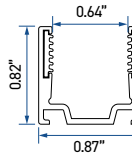
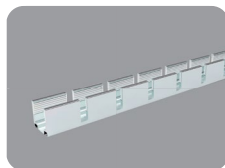
G - AFSSC60FLX



H - AFSSC60S02-100

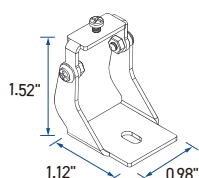


I - AF60S05FLX



J - AF60S08FLX

ACCESSORIES



Adjustable Bracket - A - AF60ADJ