

AKWAVFLEX-40

Tunable White SPECIFICATION SHEET

Project Name:

Specifier:

Location:

Product Code:



Material:
Silicone



Impact Rating:
IK08



Weatherproof Rating:
IP68
Wet Location



Operating Temp:
-40°F - 131°F



Bending Direction:
Vertical



UL Listed



Beam Angle:
120°



Dimmable:
0-10V, DMX



Bend Diameter:
>3.15"

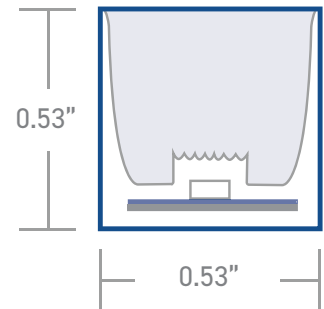


CRI:
>80+



AKWA Silicone Resin Encapsulation Vertical Bend	
Input Voltage	24V
Power Consumption	4.0W/ft
Standard CRI	>80
LEDs per foot/m	37 120
Incremental length in/mm	3.93" 100mm

Color Temperature [K]	Lumen Output [lm/ft]
2200K - 5700K	
2200K	80lm
5700K	90lm



Luminaire Options	Mono - refer to specific datasheets
Control	0-10V · DMX
Optics	opal symmetrical 120° diffuser
Finish	white
Mounting	surface · wall
Accessories	mounting channel / profile

Due to tolerances of the production process and the electrical components, values for light output, color temperature and electrical power can vary up to 10%.

How to specify KLIK USA AKWA Flex 40. Example of specification: AF40TUNXX.XBBADIM

Fixture Type	Color Temp [K]	Nominal Length [feet] with one feed ^{1,2}	Power Entry Location ³	Nominal Power Entry Termination	Mounting Profiles & Brackets	Accessories	Control
AF40	TUN 2200-5700K	XX.X Specify run Length [ft]	B Back one end B2 Back each end E End Plate one end E2 End Plate each end SL Side - Left SR Side- Right SLR Side - Left+Right	B Bare cable with anti-wick ferrule [Std] M Male IP68 Connector F Female IP68 Connector	A AF4010H02 B AF40S02 C AF40S02FLX D AF40S03 E AFSSC40S01-100	- Profile [Std] A AF40ADJ	DIM 0-10V Dim [Std] DMX1 DMX 1 Ch

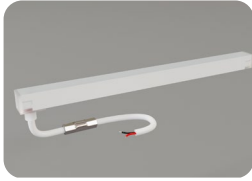
1. Specify length of run

2. Max run length per power entry feed is 21' [6.4m] and 42' [12.8m] for 2 x feeds [one at each end]

3. B2, E2 & SLR only required if exceeding the maximum single power entry as indicated above, thus requiring TWO power entries.

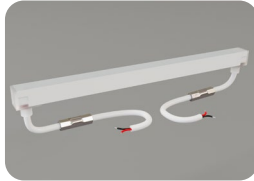
AKWAVFLEX-40

POWER ENTRY LOCATIONS



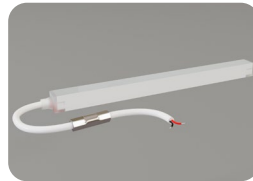
B

Power entry from the BACK of the fixture [one end]



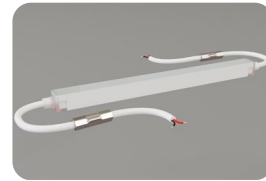
B2

Power entry from the BACK of the fixture [both ends] [for fixture length >21']



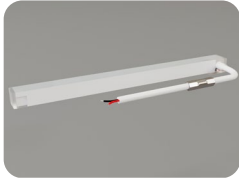
E

Power entry from the END of the fixture [one end]



E2

Power entry from the END of the fixture [both ends] [for fixture length >21']



SL

Power entry from the SIDE of the fixture [LHS]



SR

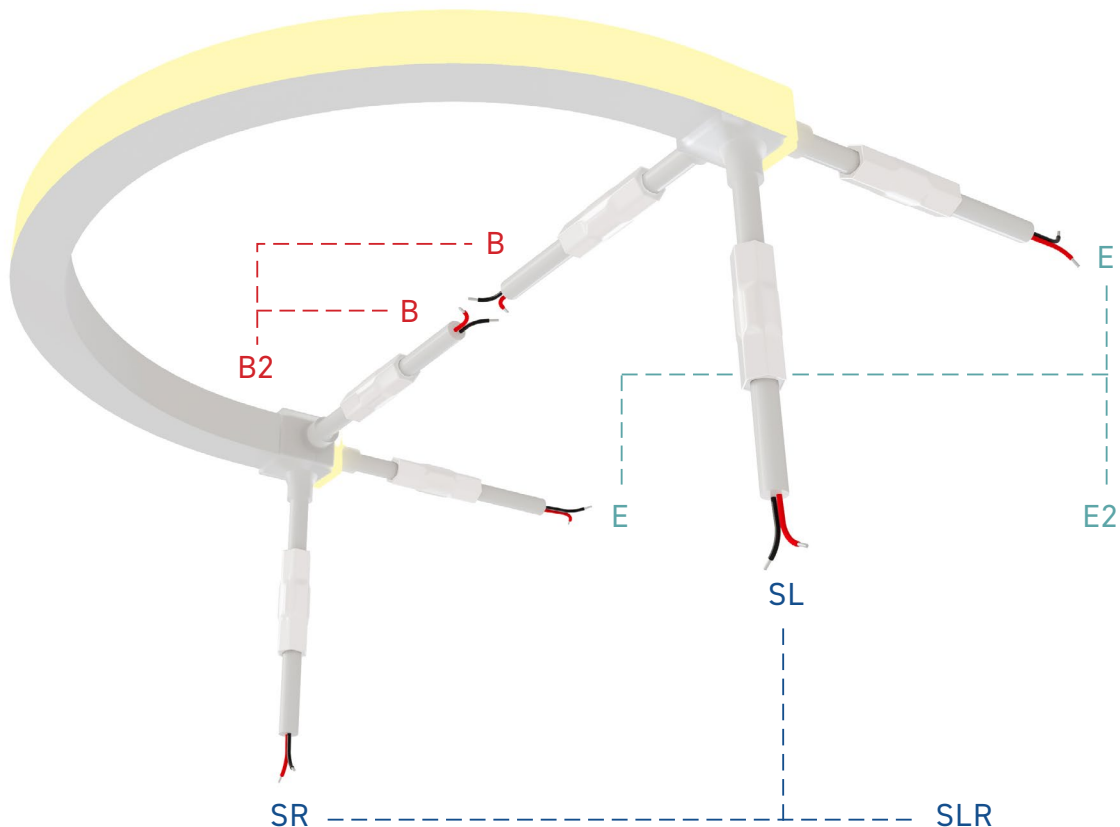
Power entry from the SIDE of the fixture [RHS]



SLR

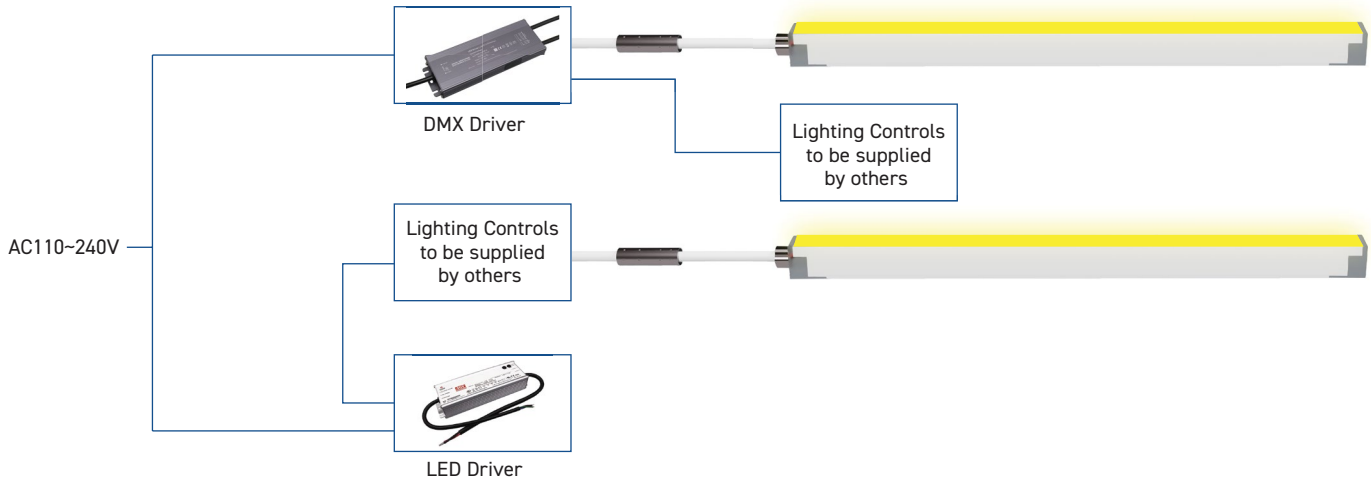
Power entry from the SIDE of the fixture [both L&R] [for fixture length >21']

POWER ENTRY ORIENTATION

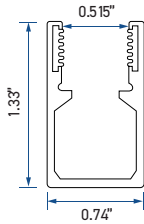


AKWAVFLEX-40 WIRING DIAGRAM

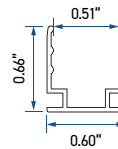
TUNABLE WHITE



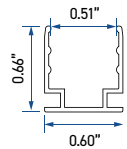
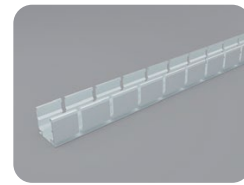
MOUNTING OPTIONS



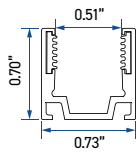
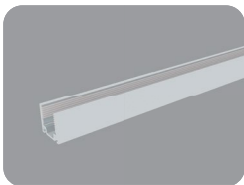
A - AF4010H02



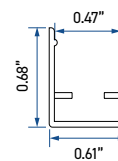
B - AF40S02



C - AF40S02FLX

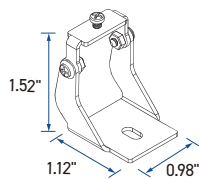


D - AF40S03



E - AFSSC40S01-100

ACCESSORIES



Adjustable Bracket - A - AF40ADJ