

AKWAVFLEX-100

Tunable White SPECIFICATION SHEET

Project Name:

Specifier:

Location:

Product Code:



Material:
Silicone



Impact Rating:
IK08



Weatherproof Rating:
IP68
Wet Location



Operating Temp:
-40°F - 131°F



Bending Direction:
Vertical



UL Listed



Beam Angle:
120°



Dimmable:
0-10V, DMX



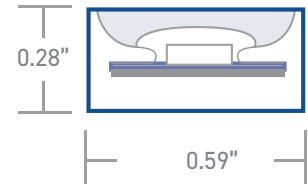
Bend Diameter:
>1.96"



CRI:
>80+



	AKWA Silicone Resin Encapsulation Vertical Bend
Input Voltage	24V
Power Consumption	3.6W/ft
Standard CRI	>80
LEDs per foot/m	37 120
Incremental length in/mm	3.93" 100mm



Color Temperature [K]	Lumen Output [lm/ft]
2200K - 5700K	
2200K	183lm
5700K	213lm

Luminaire options	Mono & RGB/W
Control	0-10V · DMX
Optics	clear symmetrical 120° diffuser
Finish	white
Mounting	surface · wall
Accessories	mounting channel / profile

Due to tolerances of the production process and the electrical components, values for light output, color temperature and electrical power can vary up to 10%.

How to specify KLIK USA AKWA Flex 100. [Example of specification: AF100TUNXX.XBBADIM](#)

Fixture Type	Color Temp [K]	Nominal Length [feet] with one feed ^{1,2}	Power Entry Location	Nominal Power Entry Termination	Mounting Profiles & Brackets	Accessories	Control
AF100	TUN 2200-5700K	XX.X Specify run Length [ft]	B Back one end B2 Back each end E End Plate one end E2 End Plate each end	B Bare cable with anti-wick ferrule [Std] M Male IP68 Connector F Female IP68 Connector	A AF100P01S01 B AF100006	- Profile [Std] A AF100ADJ	DIM 0-10V Dim [Std] DMX1 DMX 1 Ch

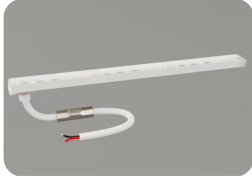
1. Specify length of run

2. Max run length per power entry feed is 27' [8.2m] 54' [16.4m] for 2 x feeds [one at each end]

3. B2 & E2 only required if exceeding the maximum single power entry as indicated above, thus requiring TWO power entries.

AKWAVFLEX-100

POWER ENTRY LOCATIONS



B

Power entry from the BACK of the fixture [one end]



B2

Power entry from the BACK of the fixture [both ends] [for fixture length > 27']



E

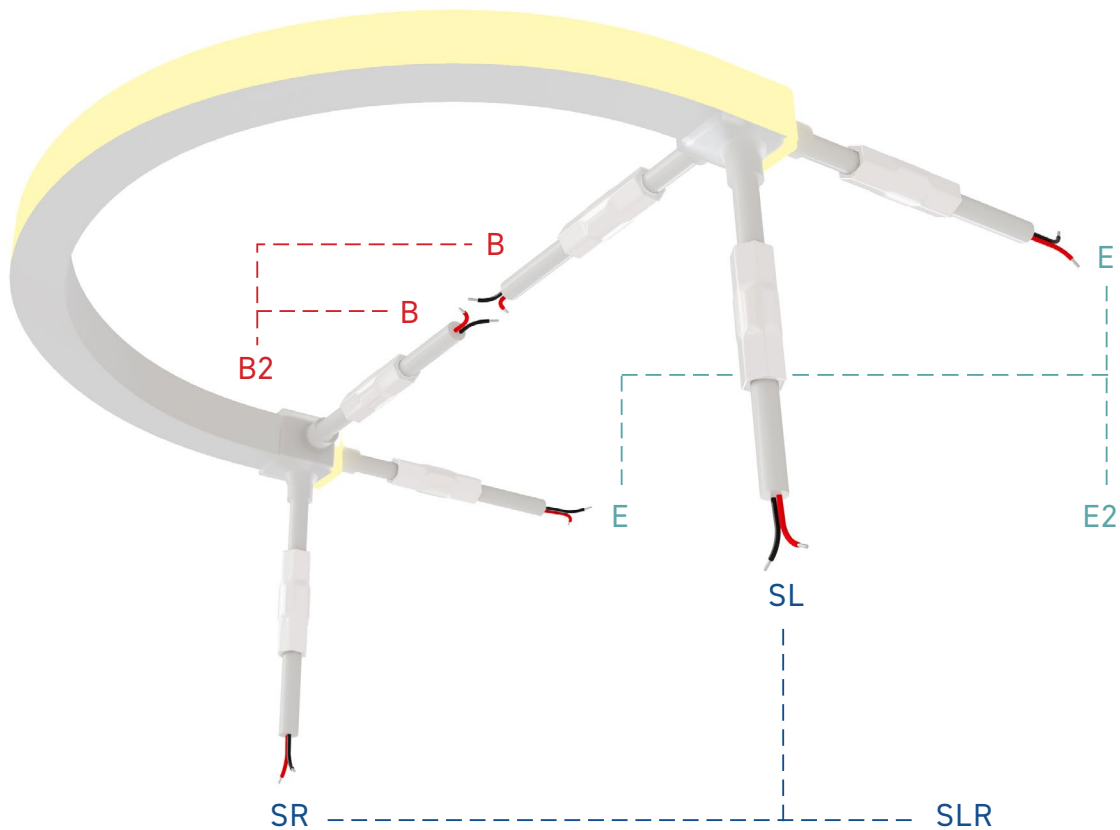
Power entry from the END of the fixture [one end]



E2

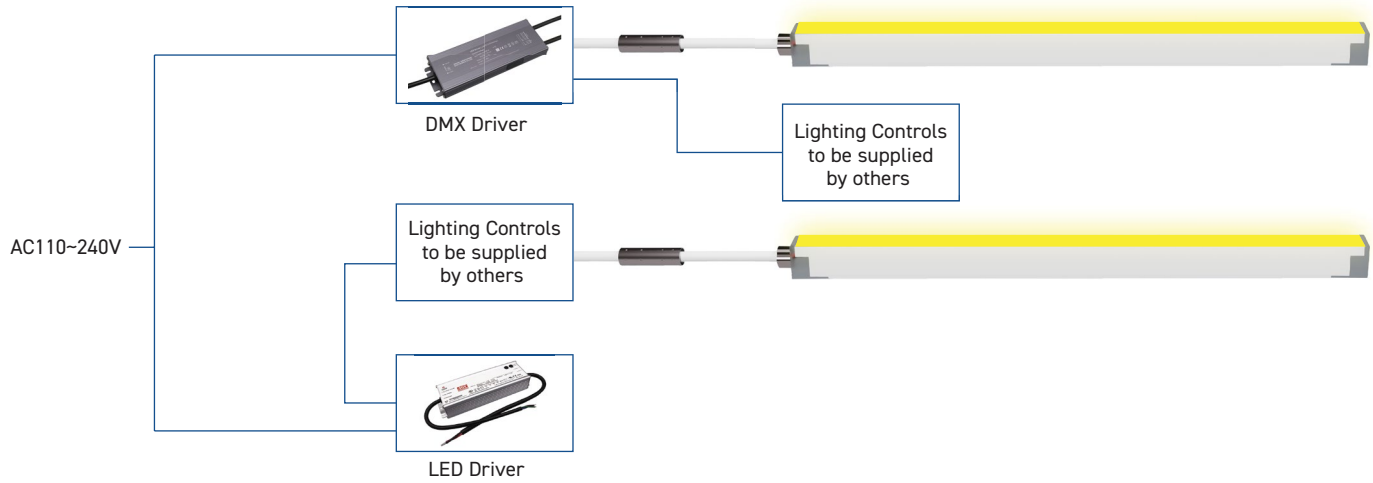
Power entry from the END of the fixture [both ends] [for fixture length > 27']

POWER ENTRY ORIENTATION

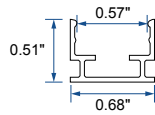
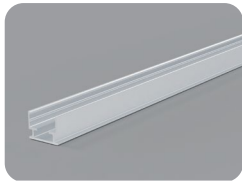


AKWAVFLEX-100 WIRING DIAGRAM

TUNABLE WHITE



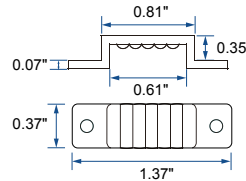
MOUNTING OPTIONS



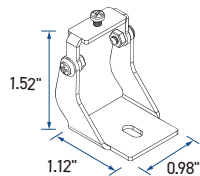
AF100P01S01



AF100006



ACCESSORIES



Adjustable Bracket - A - AF100ADJ