

AKWA+FLEX-50

DIM to WARM SPECIFICATION SHEET

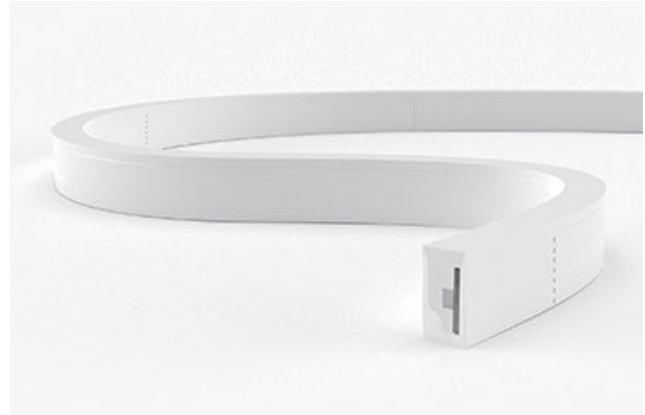
Project Name:

Specifier:

Location:

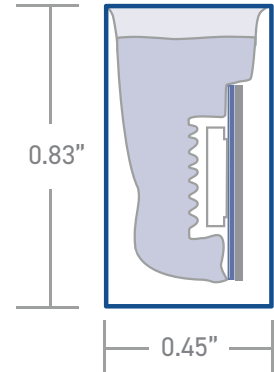
Product Code:

	Material: Silicone		Impact Rating: IK08
	Weatherproof Rating: IP68 Wet Location		Operating Temp: -40°F - 131°F
	Bending Direction: Horizontal		UL Listed
	Beam Angle: 120°		Dimmable: 0-10V, DMX
	Bend Diameter: >3.14"		CRI: >80+



	AKWA Silicone Resin Encapsulation Horizontal Bend
Input Voltage	24V
Power Consumption	3.7W/ft
Standard CRI	>80
LEDs per foot/m	36 120
Incremental length in/mm	3.93" 100mm

Color Temperature [K]	Lumen Output [lm/ft]
1800K - 3000K	
1800K	80lm
3000K	95lm



Luminaire Options	Mono, RGB/W & Tunable White available - refer to specific datasheets
Control	0-10V · DMX
Optics	opal symmetrical 120° diffuser
Finish	white
Mounting	surface · wall
Accessories	mounting channel / profile

Due to tolerances of the production process and the electrical components, values for light output, color temperature and electrical power can vary up to 10%.

How to specify KLIK USA AKWA Flex 50. Example of specification: AF50DTWXX.XBBADIM

Fixture Type	Color Temp [K]	Nominal Length [feet] with one feed ^{1,2}	Power Entry Location ³	Nominal Power Entry Termination	Mounting Profiles & Brackets	Accessories	Control
AF50	DTW 1800-3000K	XX.X Specify run Length [ft]	B Back one end B2 Back each end E End Plate one end E2 End Plate each end SL Side - Left SR Side - Right SLR Side - Left+Right	B Bare cable with anti-wick ferrule [Std] M Male IP68 Connector F Female IP68 Connector	A AF50S01 B AF50S04 C AF50H05 D AF50V01 E AFPC50S01-T F AFSSC50FLX G AFSSC50S01-05 H AFSSC50S02-100 I AF50S01FLX J AF50S04FLX	- Profile [Std] A AF50ADJ	DIM 0-10V Dim DMX1 DMX 1 Ch

1. Specify length of run

2. Max run length per power entry feed is 22' [6.7m] and 44' [13.4m] for 2 x feeds [one at each end]

3. B2, E2 & SLR only required if exceeding the maximum single power entry as indicated above, thus requiring TWO power entries.

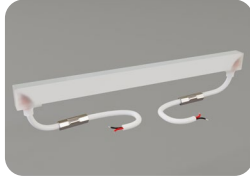
AKWA+FLEX-50

POWER ENTRY LOCATIONS



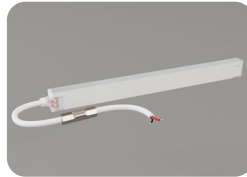
B

Power entry from the **BACK** of the fixture [one end]



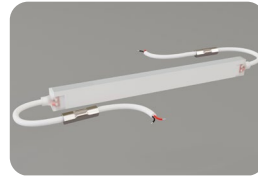
B2

Power entry from the **BACK** of the fixture [both ends] [for fixture length >22']



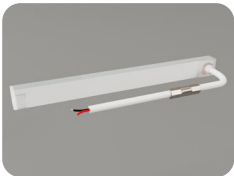
E

Power entry from the **END** of the fixture [one end]



E2

Power entry from the **END** of the fixture [both ends] [for fixture length >22']



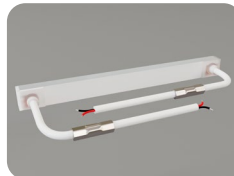
SL

Power entry from the **SIDE** of the fixture [LHS]



SR

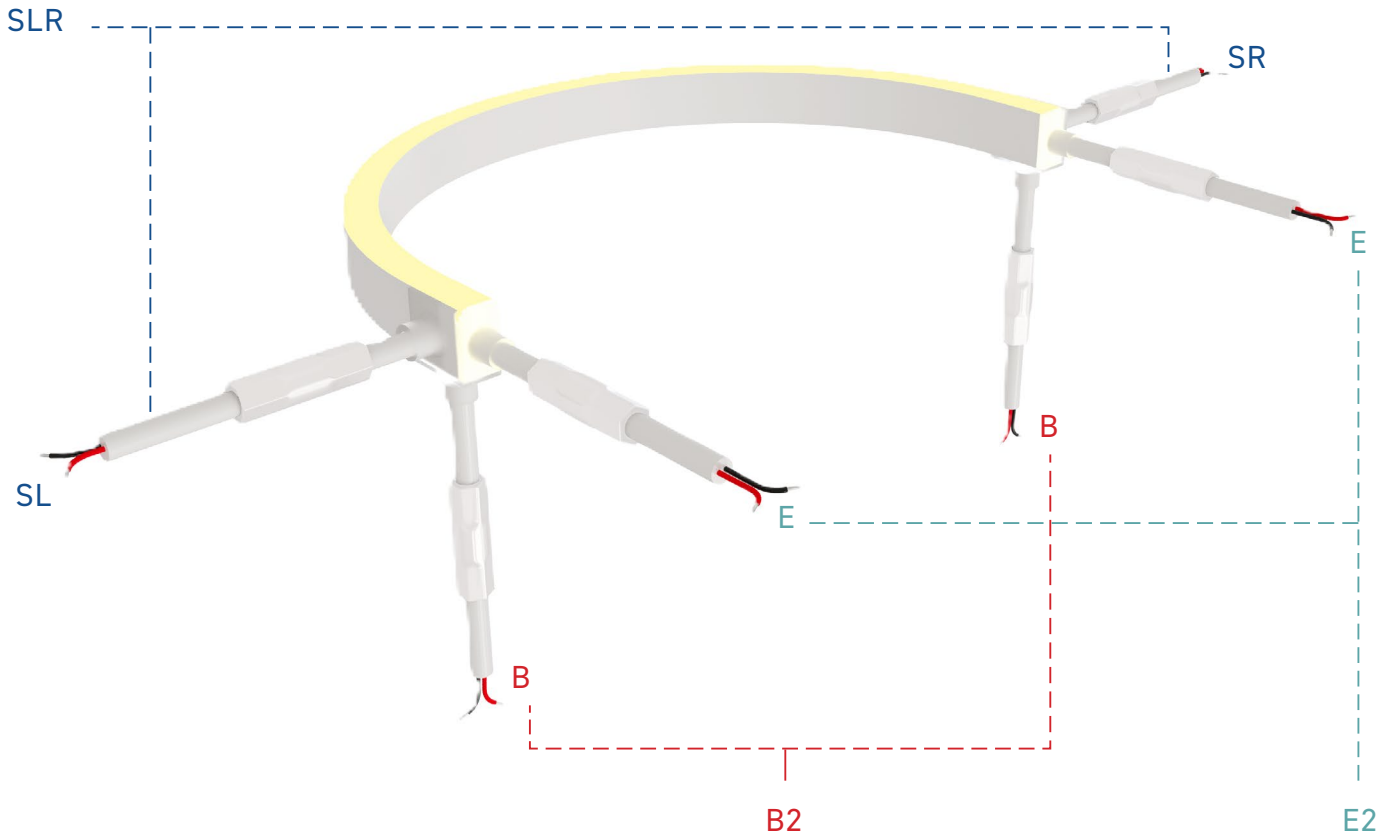
Power entry from the **SIDE** of the fixture [RHS]



SLR

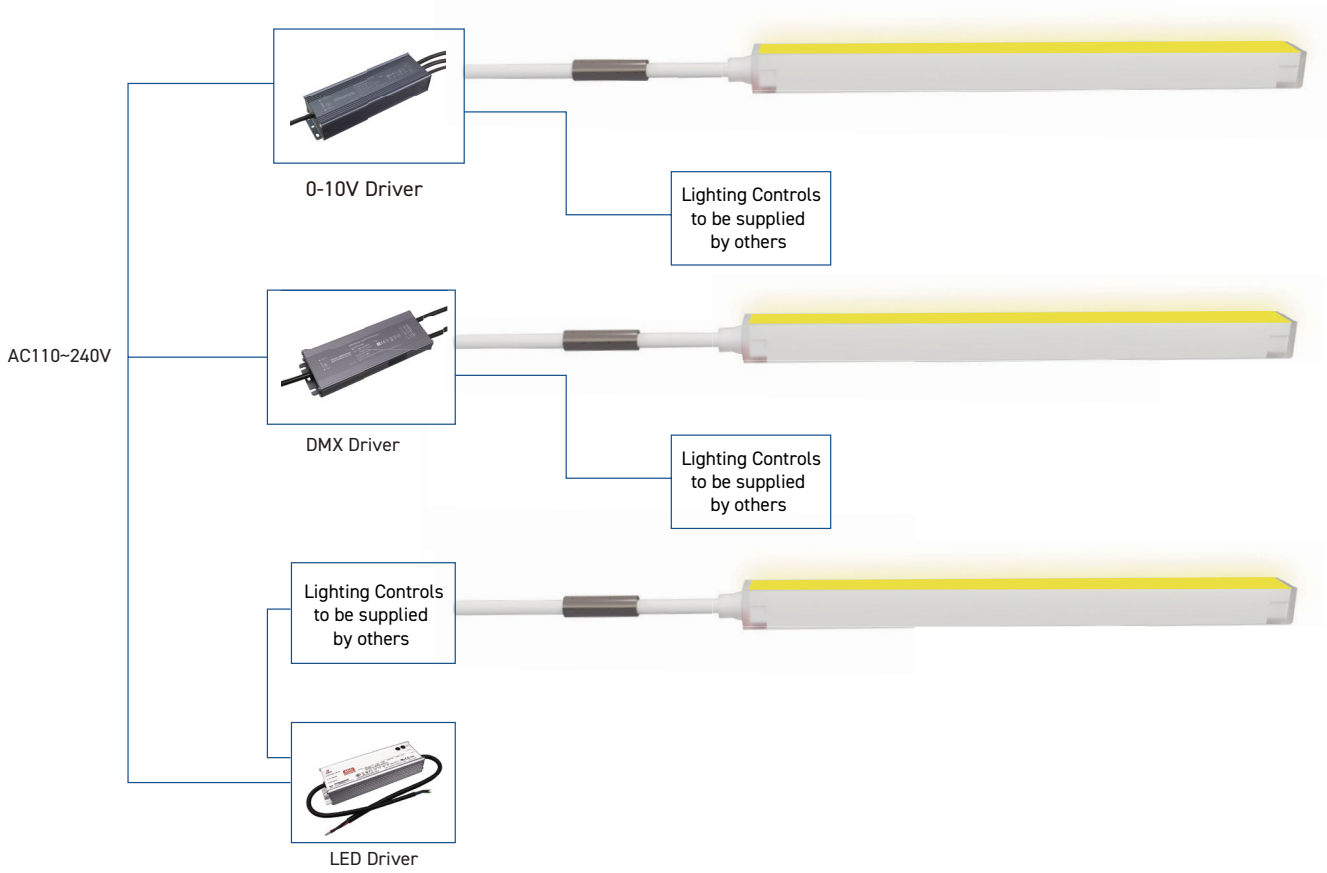
Power entry from the **SIDE** of the fixture [both L&R] [for fixture length >22']

POWER ENTRY ORIENTATION



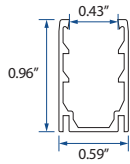
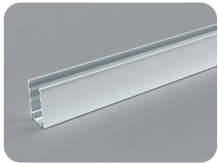
AKWA+FLEX-50 WIRING DIAGRAMS

DIM TO WARM

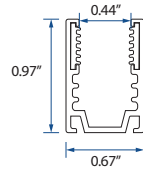
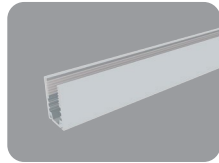


AKWA+FLEX-50

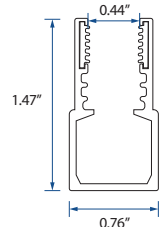
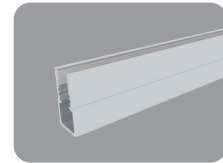
MOUNTING OPTIONS



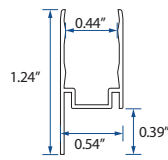
A - AF50S01



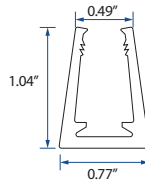
B - AF50S04



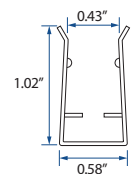
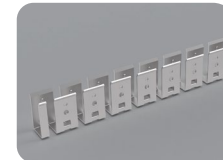
C - AF50H05



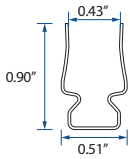
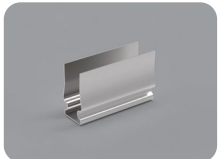
D - AF50V01



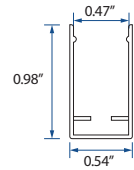
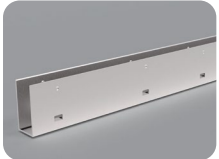
E - AFPC50S01-T



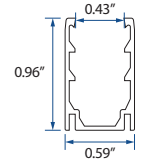
F - AFSSC50FLX



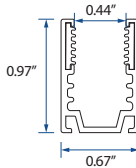
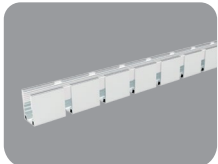
G - AFSSC50S01-05



H - AFSSC50S02-100

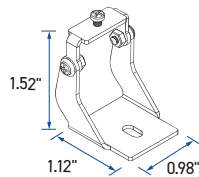


I - AF50S01FLX



J - AF50S04FLX

ACCESSORIES



Adjustable Bracket - A - AF50ADJ